

Spring Brook House - Access Control Package

Project Name: **Security Upgrades**

Project Number:

Prepared for:

Rock Valley College
3301 N. Mulford Rd.
Rockford, IL 61114

Architect: N/A
Contractor: N/A
Engineer: N/A

Table of Contents

Spring Brook House - Access Control Package	1
Specifications	3
Specifications.pdf	4
Drawings set.....	5
Drawing set.pdf	6

Specifications

Access Control

1. Head-End:

- A. Check, configure, and commission new access control controllers and wireless gateways.

Owner

The Owner will supply the following items for installation and connection by this Contractor:

1. IP Network connection from a network switch for the new Wireless Locks system. Document port name and number.

Drawings set

ROCK VALLEY COLLEGE SPRING BROOK HOUSE

6520 SPRING BROOK HOUSE
ROCKFORD, IL 61114

ACCESS CONTROL
PROJECT NUMBER: GA24G3142
ISSUED FOR REVIEW:

TABLE OF CONTENTS:

<u>SHEET NO.</u>	<u>REV.</u>	<u>DESCRIPTION</u>	<u>DATE</u>	<u>SHEET DESCRIPTION</u>
RVC_SBH_A_001	1	ISSUED FOR REVIEW	07/26/24	TITLE SHEET & TABLE OF CONTENTS
RVC_SBH_G_100	1	ISSUED FOR REVIEW	07/26/24	SYMBOL LEGEND & GENERAL NOTES
RVC_SBH_W_200	1	ISSUED FOR REVIEW	07/26/24	DEVICE LOCATIONS - WIRELESS LOCKS - GROUND FLOOR
RVC_SBH_W_210	1	ISSUED FOR REVIEW	07/26/24	DEVICE LOCATIONS - WIRELESS LOCKS - 1ST FLOOR
RVC_SBH_G_400	1	ISSUED FOR REVIEW	07/26/24	ACCESS CONTROL & WIRELESS LOCK SYSTEM TERMINATION DETAILS
RVC_SBH_W_700	1	ISSUED FOR REVIEW	07/26/24	WIRELESS LOCK SYSTEM PANEL BUILD DETAILS - 00.WRLS1.1



1111 PASQUINELLI RD / WESTMONT, IL 60559
PHONE: 708.271.4700

SITE NAME & ADDRESS

ROCK VALLEY COLLEGE
SPRING BROOK HOUSE
6520 SPRING BROOK RD
ROCKFORD, IL 61114

REVISION RECORD

REV	DESCRIPTION	BY	DATE
1			

DATE: JULY 25, 2024
SCALE: NONE
DRAWN: A. BOLANOS
CHECKED: A. BOLANOS
APPROVED: A. GAGE

PROJECT NAME:
RVC – SPRING BROOK HOUSE
WIRELESS LOCKS, ACCESS CONTROL
& INTRUSION SYSTEM

SHEET TITLE:
TITLE SHEET &
TABLE OF CONTENTS

PROJECT NUMBER:
GA24G3142
SHEET NUMBER:
RVC_SBH_A_001

ACCESS CONTROL SYSTEM DEVICE LEGEND:

- CR NDE NDE SCHLAGE WIRELESS LOCK W/ BUILT-IN REQUEST TO EXIT, DOOR STATUS LOCK STATUS
- GWE GWE GATEWAY
- SEC SECURITY SYSTEM CABINET
- D_E EXISTING DOOR CONTACT

INTRUSION SYSTEM DEVICE LEGEND:

- D_E EXISTING DOOR CONTACT
- D_{AED} AED CABINET DOOR CONTACT
- KP INTRUSION KEY PAD
- MS_C CEILING-MOUNTED MOTION SENSOR
- PB PANIC BUTTON/DURESS BUTTON
- RX_4 INOVONICS EN4240R RECEIVER W/ FOUR RELAYS

POWER / NETWORK / MISC DEVICE LEGEND:

- BRG BURGLAR PANEL

WIRING SPECIFICATIONS & CONDUIT SIZING:

#	WIRE TYPE
A	18AWG / 2 CONDUCTOR, PLENUM
B	18AWG / 4 CONDUCTOR, PLENUM
C	18AWG / 5 CONDUCTOR, SHIELDED, PLENUM
D	23AWG / 4 PAIR CAT-6, PLENUM
E	22AWG / 1 PAIR AND AN 22AWG / 1 CONDUCTOR, SHIELDED, LOW-CAP, PLENUM (BELDEN 3106A)
F	"NOT USED"
G	"NOT USED"
H	"NOT USED"
J	"NOT USED"
K	"NOT USED"
L	"NOT USED"
M	"NOT USED"
N	"NOT USED"
P	"NOT USED"
Q	"NOT USED"
R	"NOT USED"

PERMISSIBLE CONDUIT FILL BASED ON OCCUPIED AREA (NEC RECOMMENDED 40% FILL FACTOR)

CONDUIT SIZE (IN)	PERMISSIBLE FILL (SQ. IN.)
3/4"	0.21 SQUARE IN.
1"	0.35 SQUARE IN.
1 1/4"	0.60 SQUARE IN.
1 1/2"	0.81 SQUARE IN.
2"	1.34 SQUARE IN.
2 1/2"	1.92 SQUARE IN.
3"	2.96 SQUARE IN.
3 1/2"	3.95 SQUARE IN.
4"	5.09 SQUARE IN.

NOTE 1: TABLE DEVELOPED FOR STEEL OR ALUMINUM ALLOY CONDUIT ONLY.

NOTE 2: NEC PRESCRIBED 40% FILL FACTOR IS FOR (3) OR MORE CABLES. A SINGLE CABLE CAN OCCUPY 53% OR TWO CABLES ARE LIMITED TO 31% CONDUIT FILL.

GENERAL NOTES

- 1) ALL CONDUIT IS TO BE 3/4" WITH PULL STRING UNLESS OTHERWISE SPECIFIED ON DRAWING. ARROW DENOTES HOME RUN BACK TO SECURITY EQUIPMENT LOCATION AS NOTED.
- 2) ALL DEVICES ARE HOME RUN WIRED UNLESS OTHERWISE SPECIFIED.
- 3) VERIFY ALL SITE CONDITIONS AND REPORT ALL PROBLEMS TO SCHNEIDER ELECTRIC.
- 4) FOLLOW CONDUIT FILL REQUIREMENTS AS DOCUMENTED BELOW ON THE WIRING LEGEND AND PRESCRIBED CONDUIT FILL TABLES. CONDUIT SPECIFIED BY ELECTRICAL CONTRACTOR CANNOT EXCEED A 40% FILL UNDER ANY CIRCUMSTANCES.
- 5) ALL CONDUIT FOR SECURITY / CCTV SYSTEM SHALL ONLY CONTAIN SECURITY & CCTV SYSTEM CABLES. WIRE FROM OTHER TRADES IS NOT PERMITTED IN THE SECURITY / CCTV CONDUIT SYSTEM UNDER ANY CIRCUMSTANCES.
- 6) BURIAL RATED CABLE TO BE USED FOR ANY UNDERGROUND RUNS.
- 7) ALL DRAWINGS INDICATE CURRENT PROJECT SCOPE WITH DARKENED PRINT. GRAYED DEVICES & WIRING INDICATE WORK THAT WAS PREVIOUSLY COMPLETED BUT IS CURRENTLY PART OF THE FULL SYSTEM.
- 8) PLENUM RATED CABLE TO BE USED IN ALL PLENUM CEILING AREAS. CONDITIONS TO BE FIELD VERIFIED AND REPORTED BACK TO SCHNEIDER ELECTRIC IF DIFFERENT THAN SHOWN ON DRAWINGS.

SYMBOLS

- XX = FLOOR NUMBER OR "ST" FOR SITE
- A = BUILDING AREA OR QUADRANT
- B = SYSTEM TYPE (SEE SYSTEM TYPES/PANEL TYPES LEGEND)
- ?? = SEQUENTIAL NUMBER IDENTIFIER
- ZZZZ = PANEL/HEAD-END LOCATION NUMBER
- YY = CONDUIT DETAIL NUMBER
- B_??? = DRAWING NUMBER
- 1 = REVISION NUMBER IDENTIFIER
- 1 = KEY NOTE IDENTIFIER

SYSTEM TYPES

- A = ACCESS CONTROL FIELD LOCATION
- C = CAMERA SYSTEM FIELD LOCATION
- W = WIRELESS LOCKS
- B = BURG / INTRUSION DETECTION

PANEL TYPES

- ACC = ACCESS CONTROL PANEL
- CAM = CAMERA SYSTEM HEAD-END/PANEL
- WRLS = LOCK WIRELESS SYSTEM HEAD-END
- BURG = BURG / INTRUSION SYSTEM HEAD-END



1111 PASQUINELLI RD./ WESTMONT, IL 60559
PHONE: 708.271.4700

SITE NAME & ADDRESS

ROCK VALLEY COLLEGE
SPRING BROOK HOUSE
6520 SPRING BROOK RD
ROCKFORD, IL 61114

REVISION RECORD

REV	DESCRIPTION	BY	DATE
1			

DATE: JULY 25, 2024
SCALE: NONE
DRAWN: A. BOLANOS
CHECKED: A. BOLANOS
APPROVED: A. GAGE

PROJECT NAME:

RVC – SPRING BROOK HOUSE
WIRELESS LOCKS, ACCESS CONTROL
& INTRUSION SYSTEM

SHEET TITLE:

SYMBOL LEGEND &
GENERAL NOTES

PROJECT NUMBER:

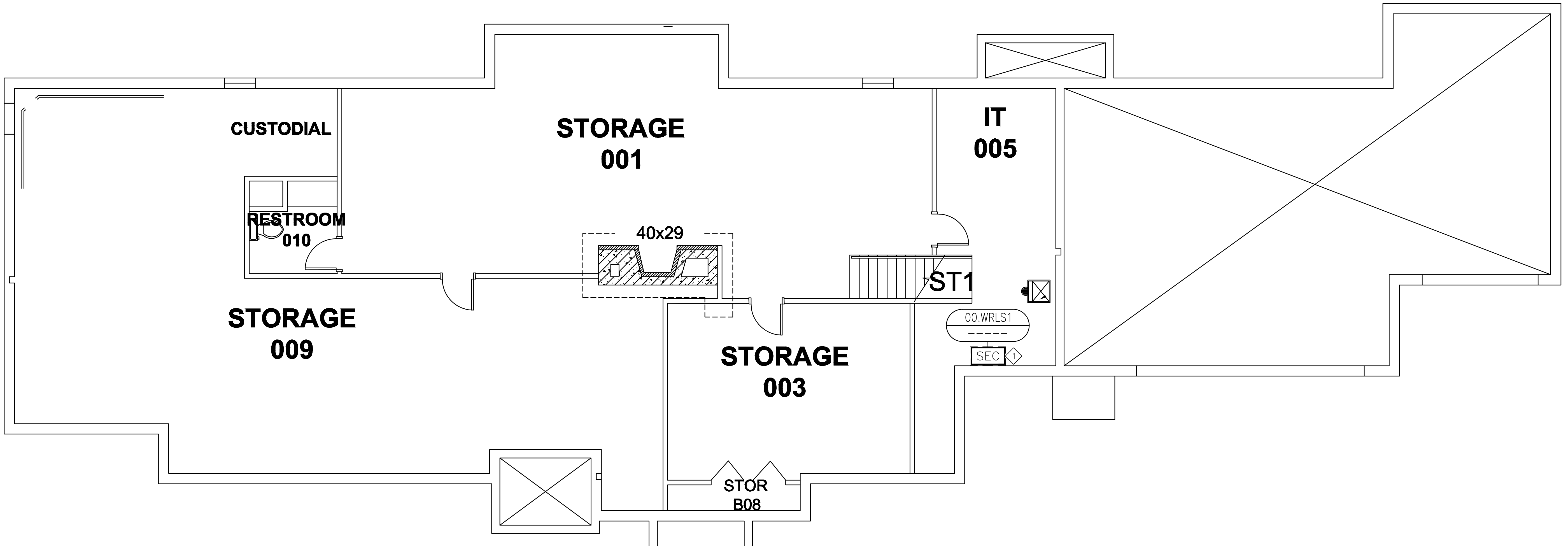
GA24G3142

SHEET NUMBER:

RVC_SBH_G_100

KEY NOTES:

① CUSTOMER TO PROVIDE AN IP DROP FOR THE ACCESS CONTROL COMMUNICATION. ELECTRICAL CONTRACTOR TO PULL CAT-6 CABLE FROM CUSTOMER NETWORK SWITCH.



SITE NAME & ADDRESS
ROCK VALLEY COLLEGE
SPRING BROOK HOUSE
6520 SPRING BROOK RD
ROCKFORD, IL 61114

REVISION RECORD

REV	DESCRIPTION	BY	DATE
1			

DATE: JULY 16, 2024
SCALE: NONE
DRAWN: A. BOLANOS
CHECKED: A. BOLANOS
APPROVED: A. GAGE

PROJECT NAME:
RVC – SPRING BROOK HOUSE
WIRELESS LOCKS, ACCESS CONTROL
& INTRUSION SYSTEM

SHEET TITLE:
DEVICE LOCATIONS –
WIRELESS LOCKS
GROUND FLOOR

PROJECT NUMBER:
GA24G3142

SHEET NUMBER:
RVC_SBH_W_200

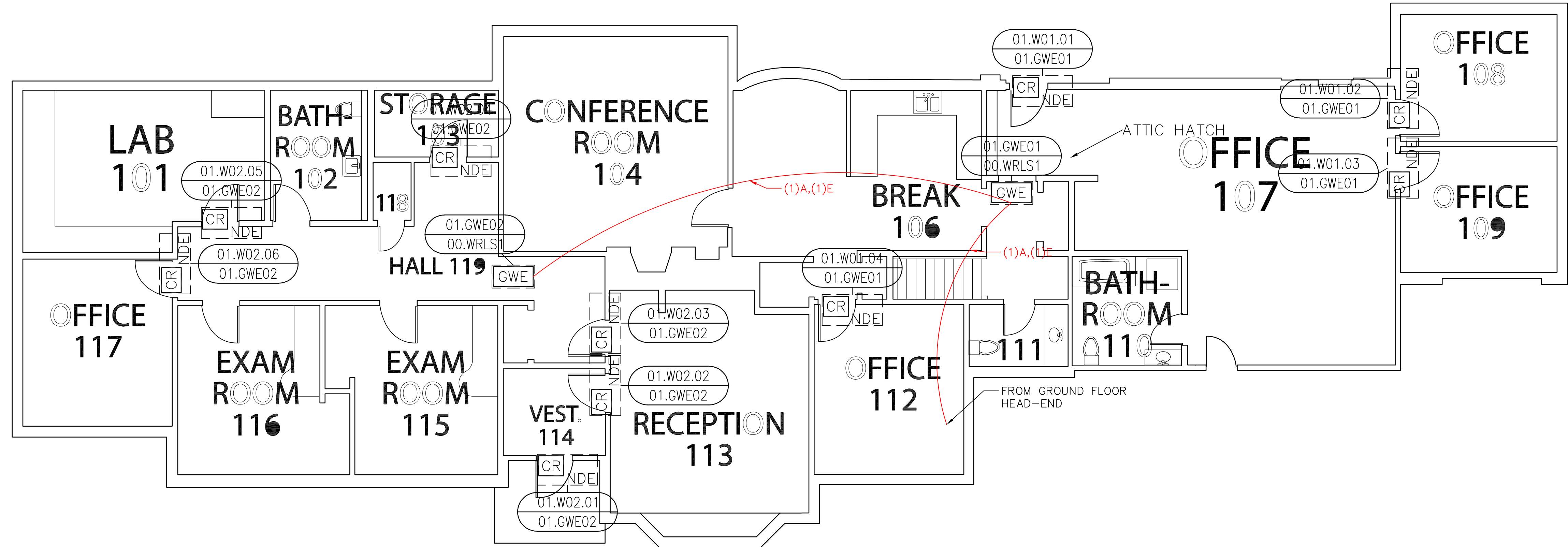
SCOPE OF WORK:

ELECTRICAL CONTRACTOR:

RUN COMMUNICATION AND POWER CABLE FROM HEAD-END TO EACH WIRELESS GATEWAY. TRIM, TERMINATE AND SET THE GATEWAYS. SEE LEGEND DRAWING G-100, WIRING DETAIL E-400 AND ELECTRICAL CONTRACTOR SPECIFICATIONS.

ACCESS CONTROL CONTRACTOR:

TRIM AND TERMINATE COMMUNICATION AND POWER CABLES AT THE HEAD-END PANEL. PROGRAM AND CONFIGURE THE GATEWAYS.



SITE NAME & ADDRESS

ROCK VALLEY COLLEGE
SPRING BROOK HOUSE
6520 SPRING BROOK RD
ROCKFORD, IL 61114

REVISION RECORD

REV	DESCRIPTION	BY	DATE
1			

DATE: JULY 16, 2024
SCALE: NONE
DRAWN: A. BOLANOS
CHECKED: A. BOLANOS
APPROVED: F. MACIEL

PROJECT NAME:
RVC - SPRING BROOK HOUSE
WIRELESS LOCKS, ACCESS CONTROL
& INTRUSION SYSTEM

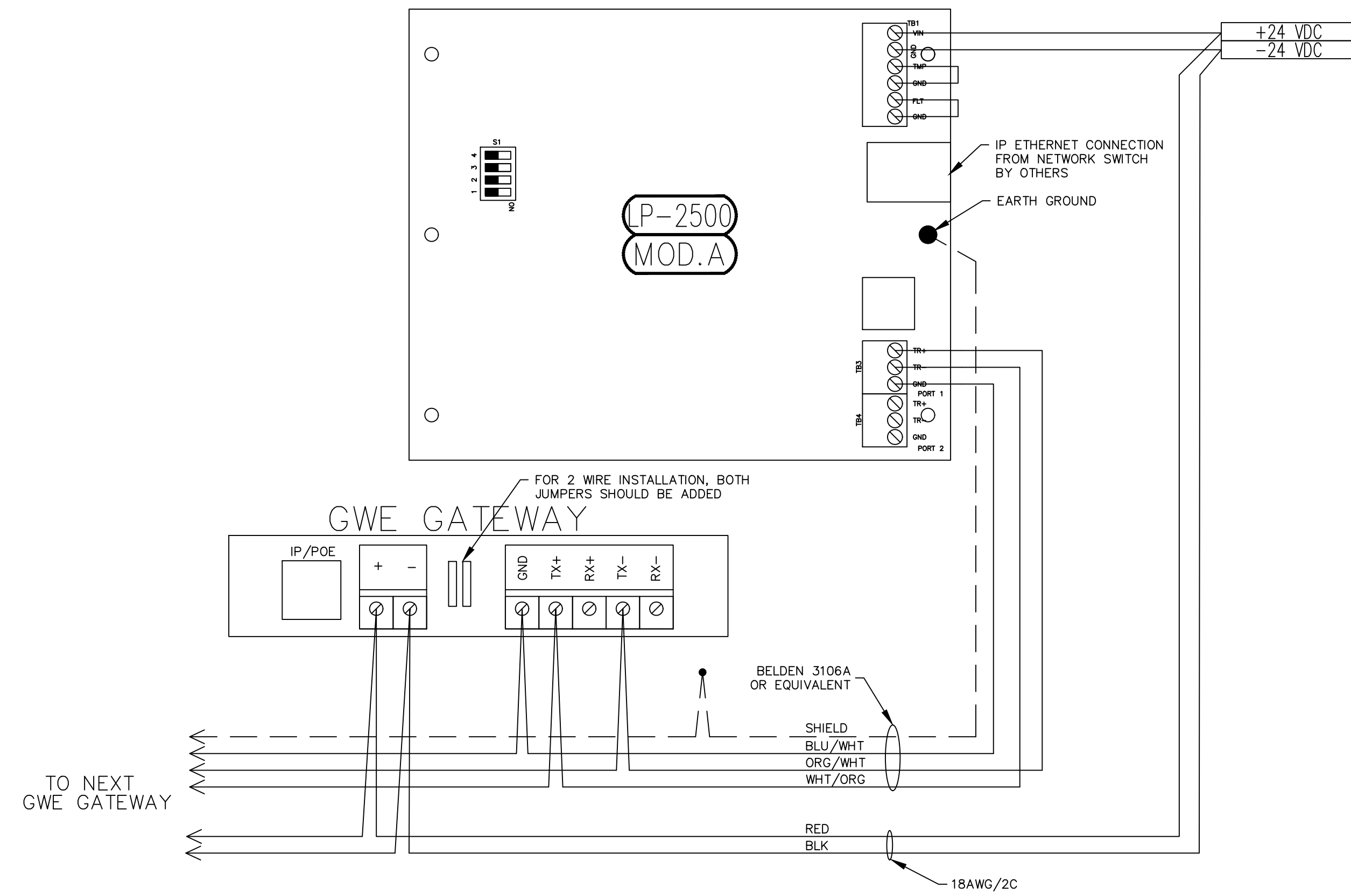
SHEET TITLE:
DEVICE LOCATIONS -
WIRELESS LOCKS
FIRST FLOOR

PROJECT NUMBER:
GA24G3142

SHEET NUMBER:
RVC_SBH_W_210

FIRST FLOOR - WIRELESS LOCKS
DEVICE LOCATION PLAN
SCALE: AS NOTED





A TYPICAL LP2500 CONTROLLER TO GWE GATEWAY WIRING DETAIL

SITE NAME & ADDRESS

ROCK VALLEY COLLEGE
SPRING BROOK HOUSE
6520 SPRING BROOK RD
ROCKFORD, IL 61114

REVISION RECORD

REV	DESCRIPTION	BY	DATE
1			

DATE: JULY 25, 2024
SCALE: NONE
DRAWN: A. BOLANOS
CHECKED: A. BOLANOS
APPROVED: A. GAGE

PROJECT NAME:
RVC - SPRING BROOK HOUSE
WIRELESS LOCKS, ACCESS CONTROL
& INTRUSION SYSTEM

SHEET TITLE:
ACCESS CONTROL & WIRELESS LOCK
SYSTEM TERMINATION DETAILS

PROJECT NUMBER:
GA24G3142

SHEET NUMBER:
RVC_SBH_G_400

GENERAL NOTES:

THE CUSTOMER IS TO PROVIDE NEW ETHERNET NETWORK CONNECTIONS FOR THE WIRELESS LOCKS.

KEY NOTES:

- 1 PROVIDE A 24VDC POWER SUPPLY AND WIRE THE AC FAIL AND LOW BATTERY ALARM TO THE NEW ACCESS CONTROL SYSTEM.
- 2 PROVIDE TWO 12V Ah BATTERY BACK-UP BATTERIES FOR THE NEW 24VDC POWER SUPPLIES.

SITE NAME & ADDRESS

ROCK VALLEY COLLEGE
SPRING BROOK HOUSE
6520 SPRING BROOK RD
ROCKFORD, IL 61114

REVISION RECORD

REV	DESCRIPTION	BY	DATE
1			

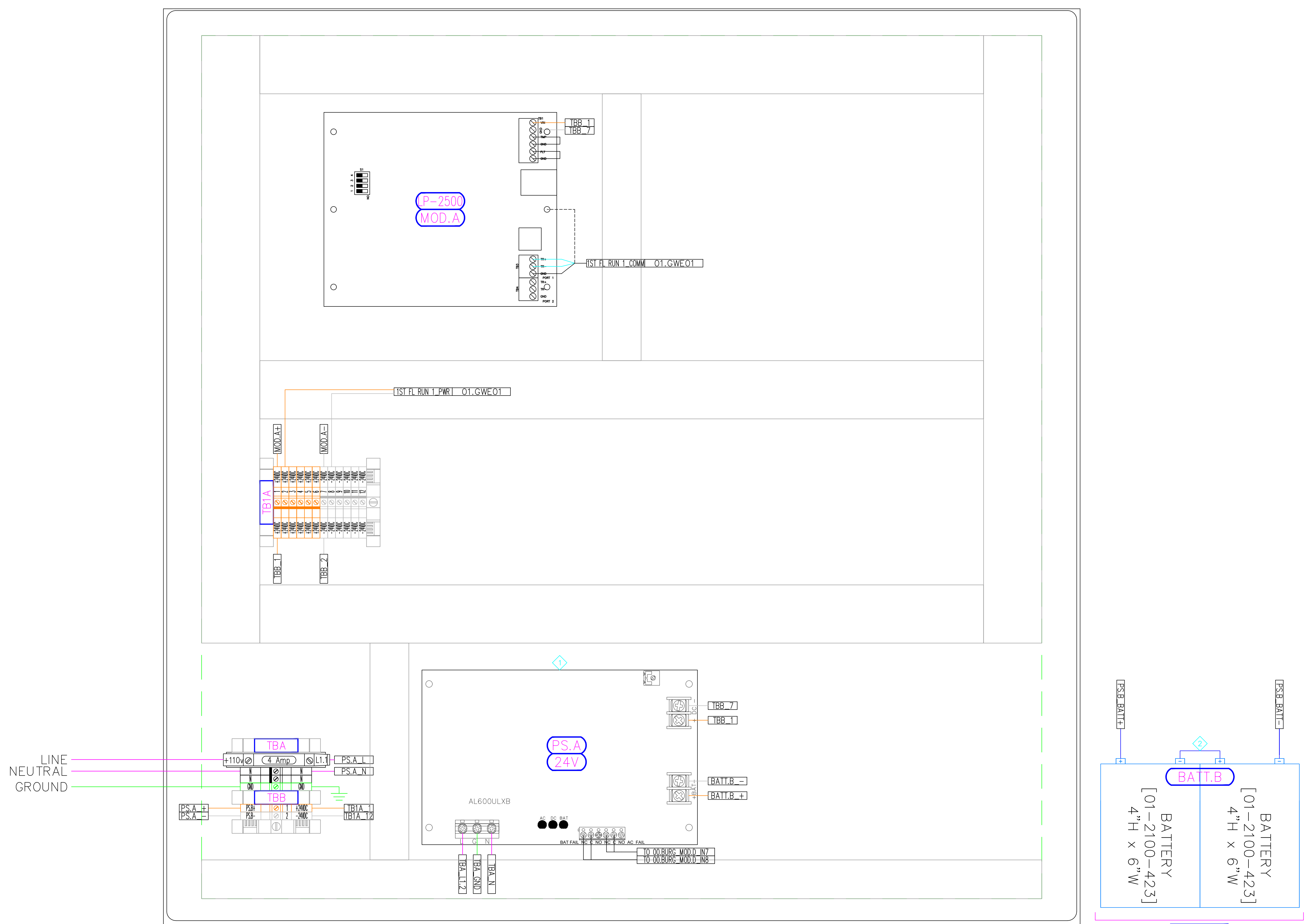
DATE: JULY 24, 2024
SCALE: NONE
DRAWN: A. BOLANOS
CHECKED: A. BOLANOS
APPROVED: A. GAGE

PROJECT NAME:
RVC - SPRING BROOK HOUSE
WIRELESS LOCKS, ACCESS CONTROL
& INTRUSION SYSTEM

SHEET TITLE:
ACCESS CONTROL WIRELESS LOCKS
PANEL BUILD
DETAILS - 00.ACC1.1

PROJECT NUMBER:
GA24G3142

SHEET NUMBER:
RVC_SBH_A_700



SCHNEIDER ELECTRIC SEBOX242408P ENCLOSURE
23.63"H x 23.63"W x 8"D

00.WRLS1
IT ROOM 005

Spring Brook House - Door Contractor_Carpenter Package

Project Name: **Security Upgrades**

Project Number:

Prepared for:

Rock Valley College
3301 N. Mulford Rd.
Rockford, IL 61114

Architect: N/A
Contractor: N/A
Engineer: N/A

Table of Contents

Spring Brook House - Door Contractor_Carpenter Package	1
Specifications	3
Specifications.pdf	4
Drawings set.....	5
Drawing set.pdf	6
Door Schedule	11
Door Schedule.pdf	12

Specifications

Door Contractor / Carpenter

Wireless Locks

1. Field Devices:

- A. Contractor to demo existing locking hardware and replace them with new Schlage NDE wireless locks.
- B. The contractor will provide any hardware needed for the wireless lock installation, such as scar plates, door drill templates, etc.
- C. Replace locking hardware batteries provided by the owner.

Owner

The Owner will supply the following items for installation and connection by this Contractor:

1. New batteries for the new wireless locks are only available upon upgrade from AD200 locks to AD400 locks or whenever necessary.

Drawings set

ROCK VALLEY COLLEGE SPRING BROOK HOUSE

6520 SPRING BROOK HOUSE
ROCKFORD, IL 61114

DOOR CONTRACTOR / CARPENTER
PROJECT NUMBER: GA24G3142
ISSUED FOR REVIEW:

TABLE OF CONTENTS:

<u>SHEET NO.</u>	<u>REV.</u>	<u>DESCRIPTION</u>	<u>DATE</u>	<u>SHEET DESCRIPTION</u>
RVC_SBH_W_001	1	ISSUED FOR REVIEW	07/26/24	TITLE SHEET & TABLE OF CONTENTS
RVC_SBH_G_100	1	ISSUED FOR REVIEW	07/26/24	SYMBOL LEGEND & GENERAL NOTES
RVC_SBH_W_200	1	ISSUED FOR REVIEW	07/26/24	DEVICE LOCATIONS - WIRELESS LOCKS - GROUND FLOOR
RVC_SBH_W_210	1	ISSUED FOR REVIEW	07/26/24	DEVICE LOCATIONS - WIRELESS LOCKS - 1ST FLOOR
RVC_SBH_G_500	1	ISSUED FOR REVIEW	07/26/24	WIRELESS LOCK SYSTEM CONDUIT INSTALLATION DETAILS



1111 PASQUINELLI RD / WESTMONT, IL 60559
PHONE: 708.271.4700

SITE NAME & ADDRESS

ROCK VALLEY COLLEGE
SPRING BROOK HOUSE
6520 SPRING BROOK RD
ROCKFORD, IL 61114

REVISION RECORD

REV	DESCRIPTION	BY	DATE
1			

DATE: JULY 25, 2024
SCALE: NONE
DRAWN: A. BOLANOS
CHECKED: A. BOLANOS
APPROVED: A. GAGE

PROJECT NAME:

RVC – SPRING BROOK HOUSE
WIRELESS LOCKS, ACCESS CONTROL
& INTRUSION SYSTEM

SHEET TITLE:

TITLE SHEET &
TABLE OF CONTENTS

PROJECT NUMBER:

GA24G3142

SHEET NUMBER:

RVC_SBH_W_001

ACCESS CONTROL SYSTEM DEVICE LEGEND:

- CR_{NDE} NDE SCHLAGE WIRELESS LOCK W/ BUILT-IN REQUEST TO EXIT, DOOR STATUS LOCK STATUS
- GWE GWE GATEWAY
- SEC SECURITY SYSTEM CABINET
- D_E EXISTING DOOR CONTACT

INTRUSION SYSTEM DEVICE LEGEND:

- D_E EXISTING DOOR CONTACT
- D_{AED} AED CABINET DOOR CONTACT
- KP INTRUSION KEY PAD
- MS_C CEILING-MOUNTED MOTION SENSOR
- PB PANIC BUTTON/DURESS BUTTON
- RX_4 INOVONICS EN4240R RECEIVER W/ FOUR RELAYS

POWER / NETWORK / MISC DEVICE LEGEND:

- BRG BURGLAR PANEL

WIRING SPECIFICATIONS & CONDUIT SIZING:

#	WIRE TYPE
A	18AWG / 2 CONDUCTOR, PLENUM
B	18AWG / 4 CONDUCTOR, PLENUM
C	18AWG / 5 CONDUCTOR, SHIELDED, PLENUM
D	23AWG / 4 PAIR CAT-6, PLENUM
E	22AWG / 1 PAIR AND AN 22AWG / 1 CONDUCTOR, SHIELDED, LOW-CAP, PLENUM (BELDEN 3106A)
F	"NOT USED"
G	"NOT USED"
H	"NOT USED"
J	"NOT USED"
K	"NOT USED"
L	"NOT USED"
M	"NOT USED"
N	"NOT USED"
P	"NOT USED"
Q	"NOT USED"
R	"NOT USED"

PERMISSIBLE CONDUIT FILL BASED ON OCCUPIED AREA (NEC RECOMMENDED 40% FILL FACTOR)

CONDUIT SIZE (IN)	PERMISSIBLE FILL (SQ. IN.)
3/4"	0.21 SQUARE IN.
1"	0.35 SQUARE IN.
1 1/4"	0.60 SQUARE IN.
1 1/2"	0.81 SQUARE IN.
2"	1.34 SQUARE IN.
2 1/2"	1.92 SQUARE IN.
3"	2.96 SQUARE IN.
3 1/2"	3.95 SQUARE IN.
4"	5.09 SQUARE IN.

NOTE 1: TABLE DEVELOPED FOR STEEL OR ALUMINUM ALLOY CONDUIT ONLY.

NOTE 2: NEC PRESCRIBED 40% FILL FACTOR IS FOR (3) OR MORE CABLES. A SINGLE CABLE CAN OCCUPY 53% OR TWO CABLES ARE LIMITED TO 31% CONDUIT FILL.

GENERAL NOTES

- 1) ALL CONDUIT IS TO BE 3/4" WITH PULL STRING UNLESS OTHERWISE SPECIFIED ON DRAWING. ARROW DENOTES HOME RUN BACK TO SECURITY EQUIPMENT LOCATION AS NOTED.
- 2) ALL DEVICES ARE HOME RUN WIRED UNLESS OTHERWISE SPECIFIED.
- 3) VERIFY ALL SITE CONDITIONS AND REPORT ALL PROBLEMS TO SCHNEIDER ELECTRIC.
- 4) FOLLOW CONDUIT FILL REQUIREMENTS AS DOCUMENTED BELOW ON THE WIRING LEGEND AND PRESCRIBED CONDUIT FILL TABLES. CONDUIT SPECIFIED BY ELECTRICAL CONTRACTOR CANNOT EXCEED A 40% FILL UNDER ANY CIRCUMSTANCES.
- 5) ALL CONDUIT FOR SECURITY / CCTV SYSTEM SHALL ONLY CONTAIN SECURITY & CCTV SYSTEM CABLES. WIRE FROM OTHER TRADES IS NOT PERMITTED IN THE SECURITY / CCTV CONDUIT SYSTEM UNDER ANY CIRCUMSTANCES.
- 6) BURIAL RATED CABLE TO BE USED FOR ANY UNDERGROUND RUNS.
- 7) ALL DRAWINGS INDICATE CURRENT PROJECT SCOPE WITH DARKENED PRINT. GRAYED DEVICES & WIRING INDICATE WORK THAT WAS PREVIOUSLY COMPLETED BUT IS CURRENTLY PART OF THE FULL SYSTEM.
- 8) PLENUM RATED CABLE TO BE USED IN ALL PLENUM CEILING AREAS. CONDITIONS TO BE FIELD VERIFIED AND REPORTED BACK TO SCHNEIDER ELECTRIC IF DIFFERENT THAN SHOWN ON DRAWINGS.

SYMBOLS

XX = FLOOR NUMBER OR "ST" FOR SITE

A = BUILDING AREA OR QUADRANT

B = SYSTEM TYPE (SEE SYSTEM TYPES/PANEL TYPES LEGEND)

?? = SEQUENTIAL NUMBER IDENTIFIER

ZZZZ = PANEL/HEAD-END LOCATION NUMBER

YY = CONDUIT DETAIL NUMBER

B_??? = DRAWING NUMBER

REVISION NUMBER IDENTIFIER

KEY NOTE IDENTIFIER

XX.A.B??
ZZZZ

YY
B_???

1

1

SYSTEM TYPES

A = ACCESS CONTROL FIELD LOCATION

C = CAMERA SYSTEM FIELD LOCATION

W = WIRELESS LOCKS

B = BURG / INTRUSION DETECTION

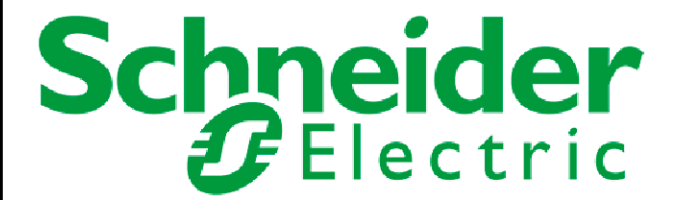
PANEL TYPES

ACC = ACCESS CONTROL PANEL

CAM = CAMERA SYSTEM HEAD-END/PANEL

WRLS = LOCK WIRELESS SYSTEM HEAD-END

BURG = BURG / INTRUSION SYSTEM HEAD-END



1111 PASQUINELLI RD./ WESTMONT, IL 60559
PHONE: 708.271.4700

SITE NAME & ADDRESS

ROCK VALLEY COLLEGE
SPRING BROOK HOUSE
6520 SPRING BROOK RD
ROCKFORD, IL 61114

REVISION RECORD

REV	DESCRIPTION	BY	DATE
1			

DATE: JULY 25, 2024
SCALE: NONE
DRAWN: A. BOLANOS
CHECKED: A. BOLANOS
APPROVED: A. GAGE

PROJECT NAME:
RVC - SPRING BROOK HOUSE
WIRELESS LOCKS, ACCESS CONTROL
& INTRUSION SYSTEM

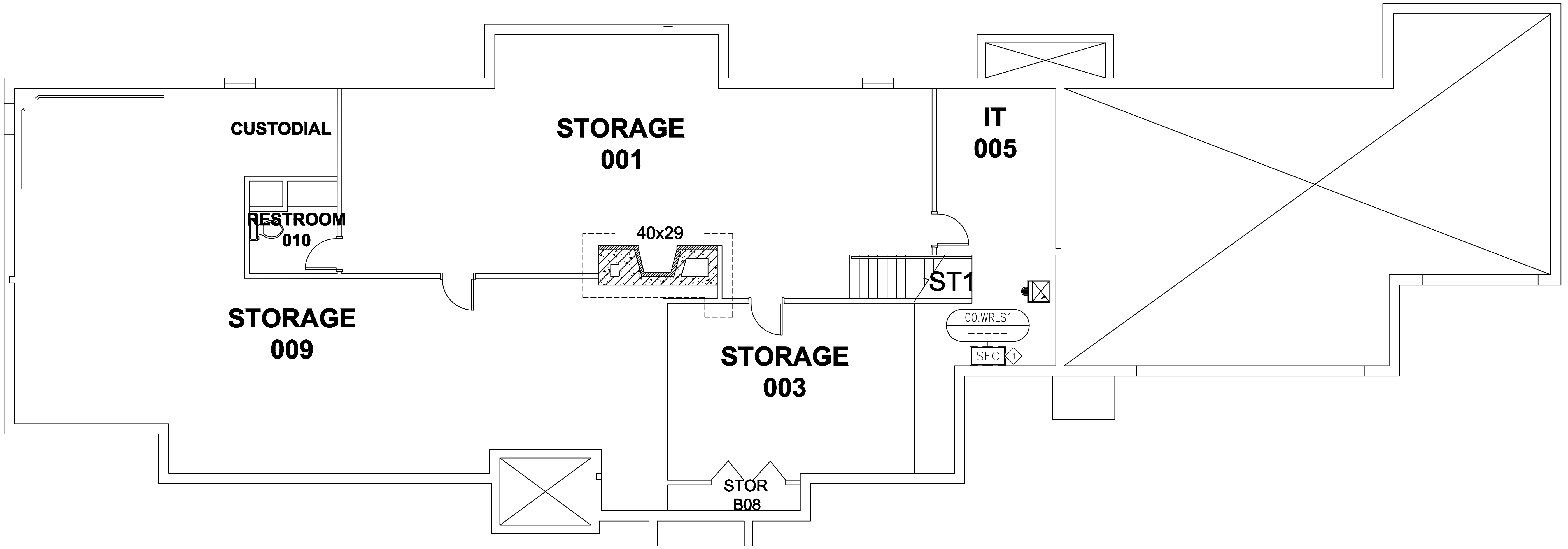
SHEET TITLE:
SYMBOL LEGEND &
GENERAL NOTES

PROJECT NUMBER:
GA24G3142

SHEET NUMBER:
RVC_SBH_G_100

KEY NOTES:

① CUSTOMER TO PROVIDE AN IP DROP FOR THE ACCESS CONTROL COMMUNICATION. ELECTRICAL CONTRACTOR TO PULL CAT-6 CABLE FROM CUSTOMER NETWORK SWITCH.



SITE NAME & ADDRESS
ROCK VALLEY COLLEGE
SPRING BROOK HOUSE
6520 SPRING BROOK RD
ROCKFORD, IL 61114

REVISION RECORD

REV	DESCRIPTION	BY	DATE
1			

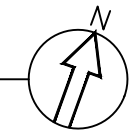
DATE: JULY 16, 2024
SCALE: NONE
DRAWN: A. BOLANOS
CHECKED: A. BOLANOS
APPROVED: A. GAGE

PROJECT NAME:
RVC – SPRING BROOK HOUSE
WIRELESS LOCKS, ACCESS CONTROL
& INTRUSION SYSTEM

SHEET TITLE:
DEVICE LOCATIONS –
WIRELESS LOCKS
GROUND FLOOR

PROJECT NUMBER:
GA24G3142

SHEET NUMBER:
RVC_SBH_W_200



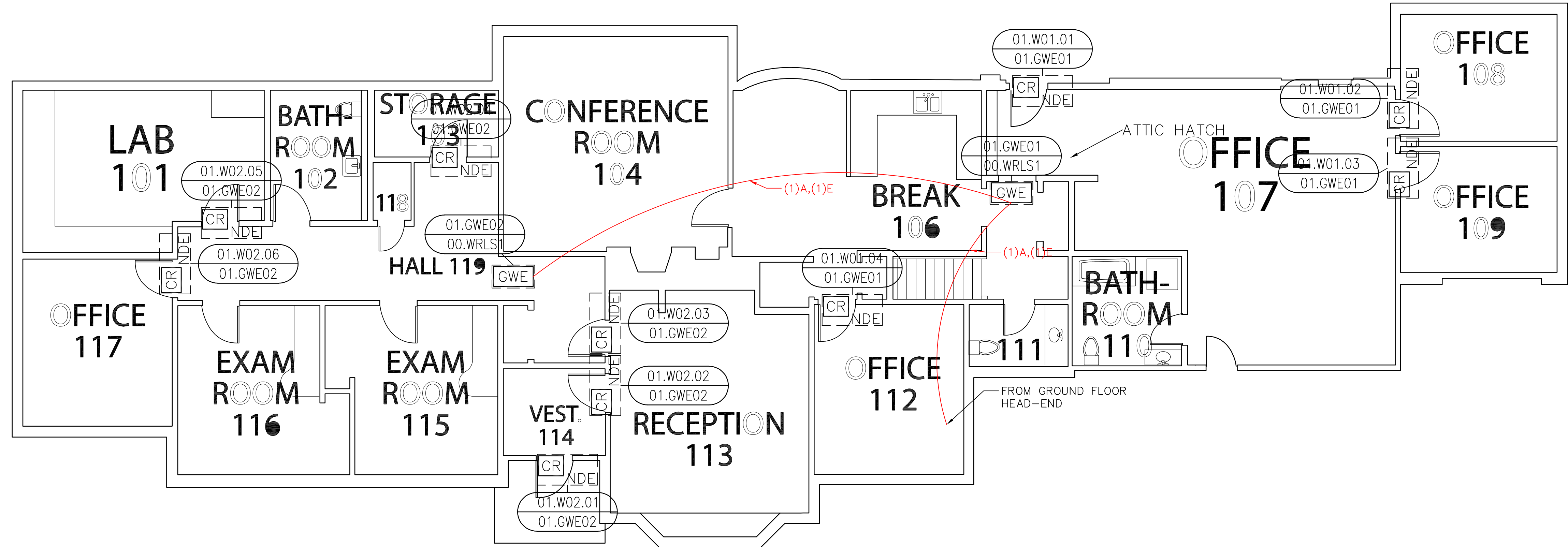
SCOPE OF WORK:

ELECTRICAL CONTRACTOR:

RUN COMMUNICATION AND POWER CABLE FROM HEAD-END TO EACH WIRELESS GATEWAY. TRIM, TERMINATE AND SET THE GATEWAYS. SEE LEGEND DRAWING G-100, WIRING DETAIL E-400 AND ELECTRICAL CONTRACTOR SPECIFICATIONS.

ACCESS CONTROL CONTRACTOR:

TRIM AND TERMINATE COMMUNICATION AND POWER CABLES AT THE HEAD-END PANEL. PROGRAM AND CONFIGURE THE GATEWAYS.



SITE NAME & ADDRESS

ROCK VALLEY COLLEGE
SPRING BROOK HOUSE
6520 SPRING BROOK RD
ROCKFORD, IL 61114

REVISION RECORD

REV	DESCRIPTION	BY	DATE
1			

DATE: JULY 16, 2024
SCALE: NONE
DRAWN: A. BOLANOS
CHECKED: A. BOLANOS
APPROVED: F. MACIEL

PROJECT NAME:
RVC - SPRING BROOK HOUSE
WIRELESS LOCKS, ACCESS CONTROL
& INTRUSION SYSTEM

SHEET TITLE:
DEVICE LOCATIONS -
WIRELESS LOCKS
FIRST FLOOR

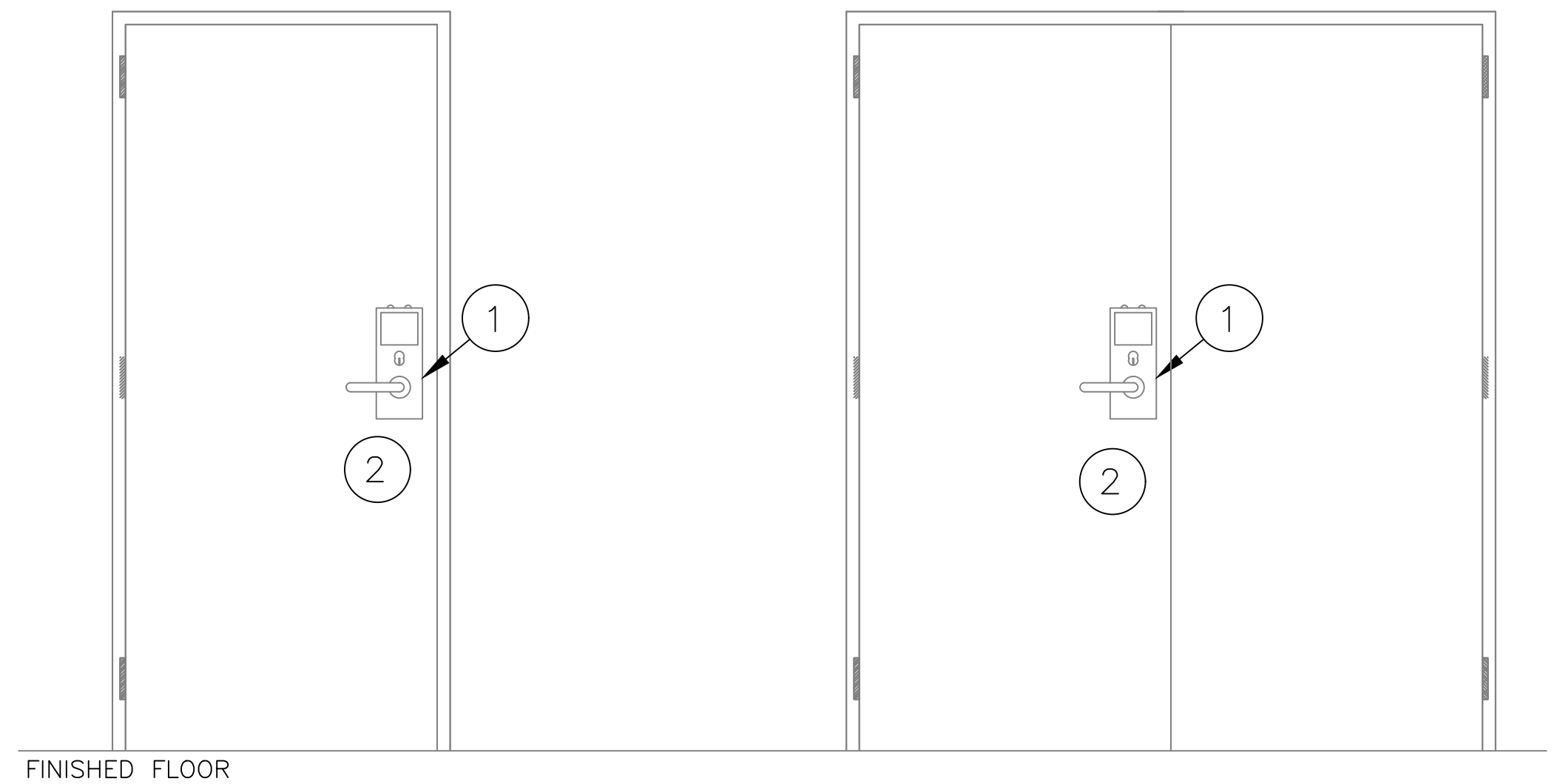
PROJECT NUMBER:
GA24G3142

SHEET NUMBER:
RVC_SBH_W_210

FIRST FLOOR - WIRELESS LOCKS
① DEVICE LOCATION PLAN
SCALE: AS NOTED

GENERAL NOTES:

DOOR CONTRACTOR/CARPENTER TO PROVIDE ANY HARDWARE NECESSARY TO MOUNT NEW WIRELESS LOCK. SEE DETAIL 1.



- ① DOOR CONTRACTOR SHALL FOLLOW THE SCHLAGE NDE LOCK INSTRUCTIONS AND INSTALLATION MANUALS AND PROVIDE ANY SCAR PLATE OR HARDWARE NEEDED FOR THE RETROFIT OR NEW INSTALLATION.
- ② DOOR CONTRACTOR TO INSTALL NEW BATTERIES PROVIDED BY CUSTOMER.

① CONDUIT DETAIL – SINGLE AND DOUBLE DOOR NDE WIRELESS LOCK
NOT TO SCALE

SITE NAME & ADDRESS

ROCK VALLEY COLLEGE
SPRING BROOK HOUSE
6520 SPRING BROOK RD
ROCKFORD, IL 61114

REVISION RECORD

REV	DESCRIPTION	BY	DATE
1			

DATE: JULY 25, 2024
SCALE: NONE
DRAWN: A. BOLANOS
CHECKED: A. BOLANOS
APPROVED: A. GAGE

PROJECT NAME:
RVC – SPRING BROOK HOUSE
WIRELESS LOCKS, ACCESS CONTROL
& INTRUSION SYSTEM

SHEET TITLE:
ACCESS CONTROL & WIRELESS
DEVICES CONDUIT INSTALLATION
DETAILS

PROJECT NUMBER:
GA24G3142
SHEET NUMBER:
RVC_SBH_G_500

Door Schedule

Spring Brook House - Door Schedule															
Room#	Location	Drawing Loc.	Series / Class	Chasis	Fuction	Reader	Lever	Finish	Cylinder Type	Keyway Type	Handling	Battery holder	Backset/Latch / Armor front	Door Thickness	Notes
107	Main Entrance / Office	01.W01.01	NDE / Allegion												
108	Office	01.W01.02	NDE / Allegion												
109	Office	01.W01.03	NDE / Allegion												
112	Office	01.W01.04	NDE / Allegion												
114	Back Door / Vestibule 114	01.W02.01	NDE / Allegion												
113	Reception	01.W02.02	NDE / Allegion												
119	Hall	01.W02.03	NDE / Allegion												
103	Storage	01.W02.04	NDE / Allegion												
101	Lab	01.W02.05	NDE / Allegion												
117	Office	01.W02.06	NDE / Allegion												

Note: Door contractor / Carpenter to fill in door information

Spring Brook House - Electric Contractor Package

Project Name: **Security Upgrades**

Project Number:

Prepared for:

Rock Valley College
3301 N. Mulford Rd.
Rockford, IL 61114

Architect: N/A
Contractor: N/A
Engineer: N/A

Table of Contents

Spring Brook House - Electric Contractor Package.....	1
Specifications	3
Drawings set.....	4
Drawing set.pdf	5

Specifications

Drawings set

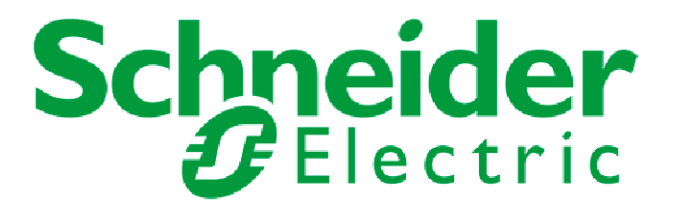
ROCK VALLEY COLLEGE SPRING BROOK HOUSE

6520 SPRING BROOK HOUSE
ROCKFORD, IL 61114

ELECTRICAL PACKAGE
PROJECT NUMBER: GA24G3142
ISSUED FOR REVIEW:

TABLE OF CONTENTS:

<u>SHEET NO.</u>	<u>REV.</u>	<u>DESCRIPTION</u>	<u>DATE</u>	<u>SHEET DESCRIPTION</u>
RVC_SBH_E_001	1	ISSUED FOR REVIEW	07/26/24	TITLE SHEET & TABLE OF CONTENTS
RVC_SBH_G_100	1	ISSUED FOR REVIEW	07/26/24	SYMBOL LEGEND & GENERAL NOTES
RVC_SBH_W_200	1	ISSUED FOR REVIEW	07/26/24	DEVICE LOCATIONS - WIRELESS LOCKS - GROUND FLOOR
RVC_SBH_W_210	1	ISSUED FOR REVIEW	07/26/24	DEVICE LOCATIONS - WIRELESS LOCKS - 1ST FLOOR
RVC_SBH_W_300	1	ISSUED FOR REVIEW	07/26/24	WIRELESS LOCKS SYSTEM RISER DIAGRAM
RVC_SBH_E_400	1	ISSUED FOR REVIEW	07/26/24	WIRELESS LOCK SYSTEM GATEWAY TERMINATION AND MOUNTING DETAILS
RVC_SBH_A_800	1	ISSUED FOR REVIEW	07/26/24	ACCESS CONTROL PANEL ELEVATIONS



1111 PASQUINELLI RD./ WESTMONT, IL 60559
PHONE: 708.271.4700

SITE NAME & ADDRESS

ROCK VALLEY COLLEGE
SPRING BROOK HOUSE
6520 SPRING BROOK RD
ROCKFORD, IL 61114

REVISION RECORD

REV	DESCRIPTION	BY	DATE
1			

DATE: JULY 25, 2024
SCALE: NONE
DRAWN: A. BOLANOS
CHECKED: A. BOLANOS
APPROVED: A. GAGE

PROJECT NAME:
RVC – SPRING BROOK HOUSE
WIRELESS LOCKS, ACCESS CONTROL
& INTRUSION SYSTEM

SHEET TITLE:
TITLE SHEET &
TABLE OF CONTENTS

PROJECT NUMBER:
GA24G3142
SHEET NUMBER:
RVC_SBH_E_001

ACCESS CONTROL SYSTEM DEVICE LEGEND:

- CR**_{NDE} NDE SCHLAGE WIRELESS LOCK W/ BUILT-IN REQUEST TO EXIT, DOOR STATUS LOCK STATUS
- GWE** GWE GATEWAY
- SEC** SECURITY SYSTEM CABINET
- D**_E EXISTING DOOR CONTACT

INTRUSION SYSTEM DEVICE LEGEND:

- D**_E EXISTING DOOR CONTACT
- D**_{AED} AED CABINET DOOR CONTACT
- KP** INTRUSION KEY PAD
- MS**_C CEILING-MOUNTED MOTION SENSOR
- PB** PANIC BUTTON/DURESS BUTTON
- RX_4** INOVONICS EN4240R RECEIVER W/ FOUR RELAYS

POWER / NETWORK / MISC DEVICE LEGEND:

- BRG** BURGLAR PANEL

WIRING SPECIFICATIONS & CONDUIT SIZING:

#	WIRE TYPE
A	18AWG / 2 CONDUCTOR, PLENUM
B	18AWG / 4 CONDUCTOR, PLENUM
C	18AWG / 5 CONDUCTOR, SHIELDED, PLENUM
D	23AWG / 4 PAIR CAT-6, PLENUM
E	22AWG / 1 PAIR AND AN 22AWG / 1 CONDUCTOR, SHIELDED, LOW-CAP, PLENUM (BELDEN 3106A)
F	"NOT USED"
G	"NOT USED"
H	"NOT USED"
J	"NOT USED"
K	"NOT USED"
L	"NOT USED"
M	"NOT USED"
N	"NOT USED"
P	"NOT USED"
Q	"NOT USED"
R	"NOT USED"

PERMISSIBLE CONDUIT FILL BASED ON OCCUPIED AREA (NEC RECOMMENDED 40% FILL FACTOR)

CONDUIT SIZE (IN)	PERMISSIBLE FILL (SQ. IN.)
3/4"	0.21 SQUARE IN.
1"	0.35 SQUARE IN.
1 1/4"	0.60 SQUARE IN.
1 1/2"	0.81 SQUARE IN.
2"	1.34 SQUARE IN.
2 1/2"	1.92 SQUARE IN.
3"	2.96 SQUARE IN.
3 1/2"	3.95 SQUARE IN.
4"	5.09 SQUARE IN.

NOTE 1: TABLE DEVELOPED FOR STEEL OR ALUMINUM ALLOY CONDUIT ONLY.

NOTE 2: NEC PRESCRIBED 40% FILL FACTOR IS FOR (3) OR MORE CABLES. A SINGLE CABLE CAN OCCUPY 53% OR TWO CABLES ARE LIMITED TO 31% CONDUIT FILL.

GENERAL NOTES

- ALL CONDUIT IS TO BE 3/4" WITH PULL STRING UNLESS OTHERWISE SPECIFIED ON DRAWING. ARROW DENOTES HOME RUN BACK TO SECURITY EQUIPMENT LOCATION AS NOTED.
- ALL DEVICES ARE HOME RUN WIRED UNLESS OTHERWISE SPECIFIED.
- VERIFY ALL SITE CONDITIONS AND REPORT ALL PROBLEMS TO SCHNEIDER ELECTRIC.
- FOLLOW CONDUIT FILL REQUIREMENTS AS DOCUMENTED BELOW ON THE WIRING LEGEND AND PRESCRIBED CONDUIT FILL TABLES. CONDUIT SPECIFIED BY ELECTRICAL CONTRACTOR CANNOT EXCEED A 40% FILL UNDER ANY CIRCUMSTANCES.
- ALL CONDUIT FOR SECURITY / CCTV SYSTEM SHALL ONLY CONTAIN SECURITY & CCTV SYSTEM CABLES. WIRE FROM OTHER TRADES IS NOT PERMITTED IN THE SECURITY / CCTV CONDUIT SYSTEM UNDER ANY CIRCUMSTANCES.
- BURIAL RATED CABLE TO BE USED FOR ANY UNDERGROUND RUNS.
- ALL DRAWINGS INDICATE CURRENT PROJECT SCOPE WITH DARKENED PRINT. GRAYED DEVICES & WIRING INDICATE WORK THAT WAS PREVIOUSLY COMPLETED BUT IS CURRENTLY PART OF THE FULL SYSTEM.
- PLENUM RATED CABLE TO BE USED IN ALL PLENUM CEILING AREAS. CONDITIONS TO BE FIELD VERIFIED AND REPORTED BACK TO SCHNEIDER ELECTRIC IF DIFFERENT THAN SHOWN ON DRAWINGS.

SYMBOLS

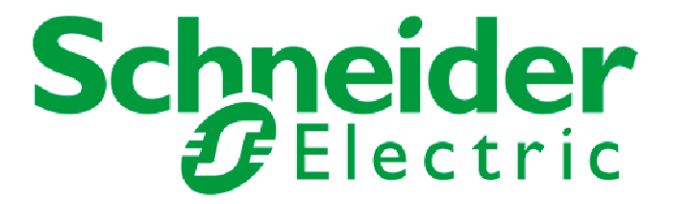
- XX = FLOOR NUMBER OR "ST" FOR SITE
- A = BUILDING AREA OR QUADRANT
- B = SYSTEM TYPE (SEE SYSTEM TYPES/PANEL TYPES LEGEND)
- ?? = SEQUENTIAL NUMBER IDENTIFIER
- ZZZZ = PANEL/HEAD-END LOCATION NUMBER
- YY = CONDUIT DETAIL NUMBER
- B_??? = DRAWING NUMBER
- 1 = REVISION NUMBER IDENTIFIER
- 1 = KEY NOTE IDENTIFIER

SYSTEM TYPES

- A = ACCESS CONTROL FIELD LOCATION
- C = CAMERA SYSTEM FIELD LOCATION
- W = WIRELESS LOCKS
- B = BURG / INTRUSION DETECTION

PANEL TYPES

- ACC = ACCESS CONTROL PANEL
- CAM = CAMERA SYSTEM HEAD-END/PANEL
- WRLS = LOCK WIRELESS SYSTEM HEAD-END
- BURG = BURG / INTRUSION SYSTEM HEAD-END



1111 PASQUINELLI RD./ WESTMONT, IL 60559
PHONE: 708.271.4700

SITE NAME & ADDRESS

ROCK VALLEY COLLEGE
SPRING BROOK HOUSE
6520 SPRING BROOK RD
ROCKFORD, IL 61114

REVISION RECORD

REV	DESCRIPTION	BY	DATE
1			

DATE: JULY 25, 2024
SCALE: NONE
DRAWN: A. BOLANOS
CHECKED: A. BOLANOS
APPROVED: A. GAGE

PROJECT NAME:
RVC - SPRING BROOK HOUSE
WIRELESS LOCKS, ACCESS CONTROL
& INTRUSION SYSTEM

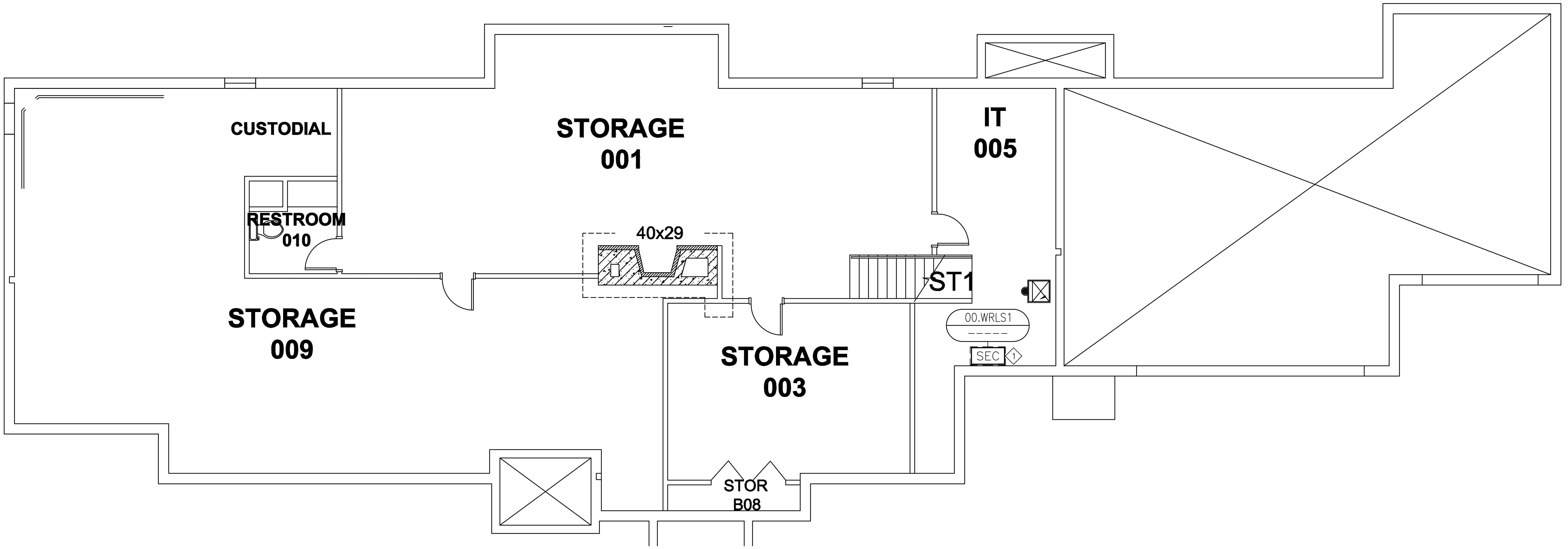
SHEET TITLE:
SYMBOL LEGEND &
GENERAL NOTES

PROJECT NUMBER:
GA24G3142

SHEET NUMBER:
RVC_SBH_G_100

KEY NOTES:

① CUSTOMER TO PROVIDE AN IP DROP FOR THE ACCESS CONTROL COMMUNICATION. ELECTRICAL CONTRACTOR TO PULL CAT-6 CABLE FROM CUSTOMER NETWORK SWITCH.



SITE NAME & ADDRESS
ROCK VALLEY COLLEGE
SPRING BROOK HOUSE
6520 SPRING BROOK RD
ROCKFORD, IL 61114

REVISION RECORD

REV	DESCRIPTION	BY	DATE
1			

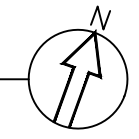
DATE: JULY 16, 2024
SCALE: NONE
DRAWN: A. BOLANOS
CHECKED: A. BOLANOS
APPROVED: A. GAGE

PROJECT NAME:
RVC – SPRING BROOK HOUSE
WIRELESS LOCKS, ACCESS CONTROL
& INTRUSION SYSTEM

SHEET TITLE:
DEVICE LOCATIONS –
WIRELESS LOCKS
GROUND FLOOR

PROJECT NUMBER:
GA24G3142

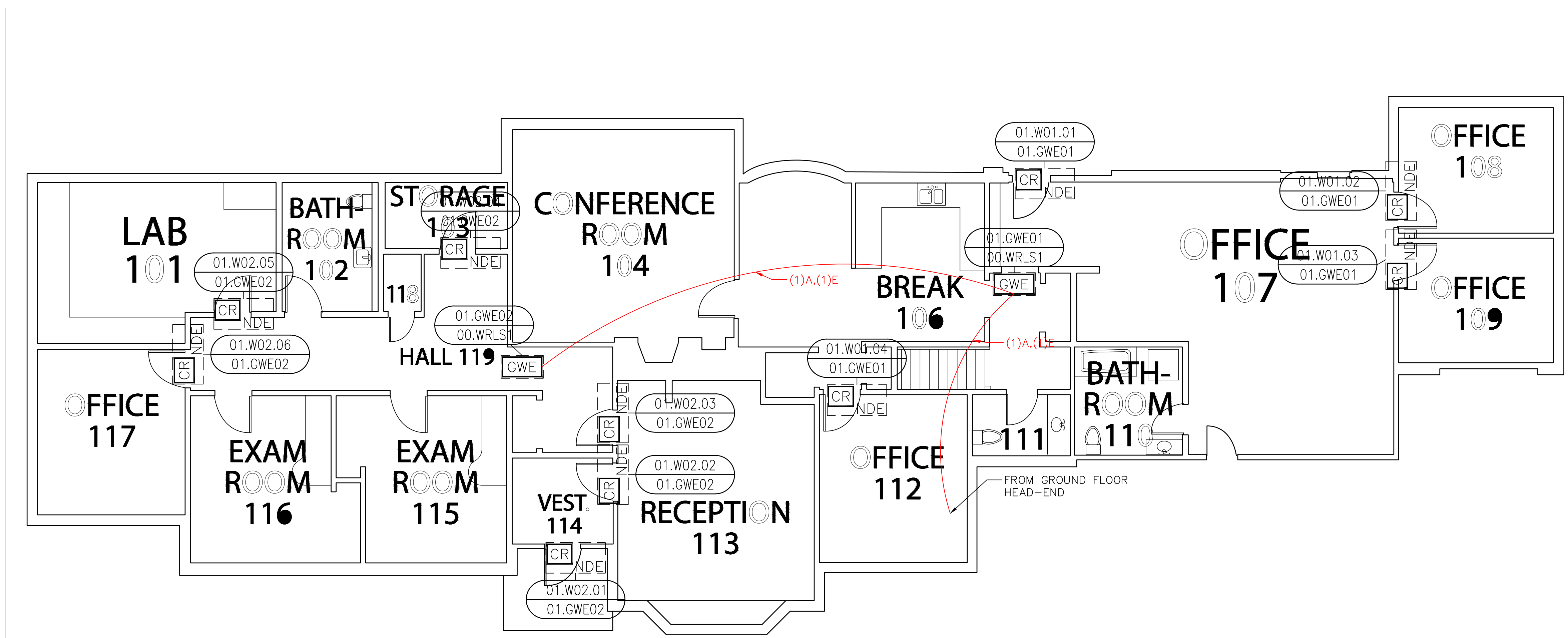
SHEET NUMBER:
RVC_SBH_W_200



SCOPE OF WORK:

ELECTRICAL CONTRACTOR:
RUN COMMUNICATION AND POWER CABLE FROM HEAD-END TO EACH WIRELESS GATEWAY. TRIM, TERMINATE AND SET THE GATEWAYS. SEE LEGEND DRAWING G_100, WIRING DETAIL E_400 AND ELECTRICAL CONTRACTOR SPECIFICATIONS.

ACCESS CONTROL CONTRACTOR:
TRIM AND TERMINATE COMMUNICATION AND POWER CABLES AT THE HEAD-END PANEL, PROGRAM AND CONFIGURE THE GATEWAYS.



SITE NAME & ADDRESS
ROCK VALLEY COLLEGE
SPRING BROOK HOUSE
6520 SPRING BROOK RD
ROCKFORD, IL 61114

REVISION RECORD

REV	DESCRIPTION	BY	DATE
1			

DATE: JULY 16, 2024
SCALE: NONE
DRAWN: A. BOLANOS
CHECKED: A. BOLANOS
APPROVED: F. MACIEL

PROJECT NAME:
RVC – SPRING BROOK HOUSE
WIRELESS LOCKS, ACCESS CONTROL
& INTRUSION SYSTEM

SHEET TITLE:
DEVICE LOCATIONS –
WIRELESS LOCKS
FIRST FLOOR

PROJECT NUMBER:
GA24G3142

SHEET NUMBER:
RVC_SBH_W_210

SITE NAME & ADDRESS

ROCK VALLEY COLLEGE
SPRING BROOK HOUSE
6520 SPRING BROOK RD
ROCKFORD, IL 61114

REVISION RECORD

REV	DESCRIPTION	BY	DATE
1			

DATE: JULY 25, 2024
SCALE: NONE
DRAWN: A. BOLANOS
CHECKED: A. BOLANOS
APPROVED: F. MACIEL

PROJECT NAME:

RVC – SPRING BROOK HOUSE
WIRELESS LOCKS, ACCESS CONTROL
& INTRUSION SYSTEM

SHEET TITLE:

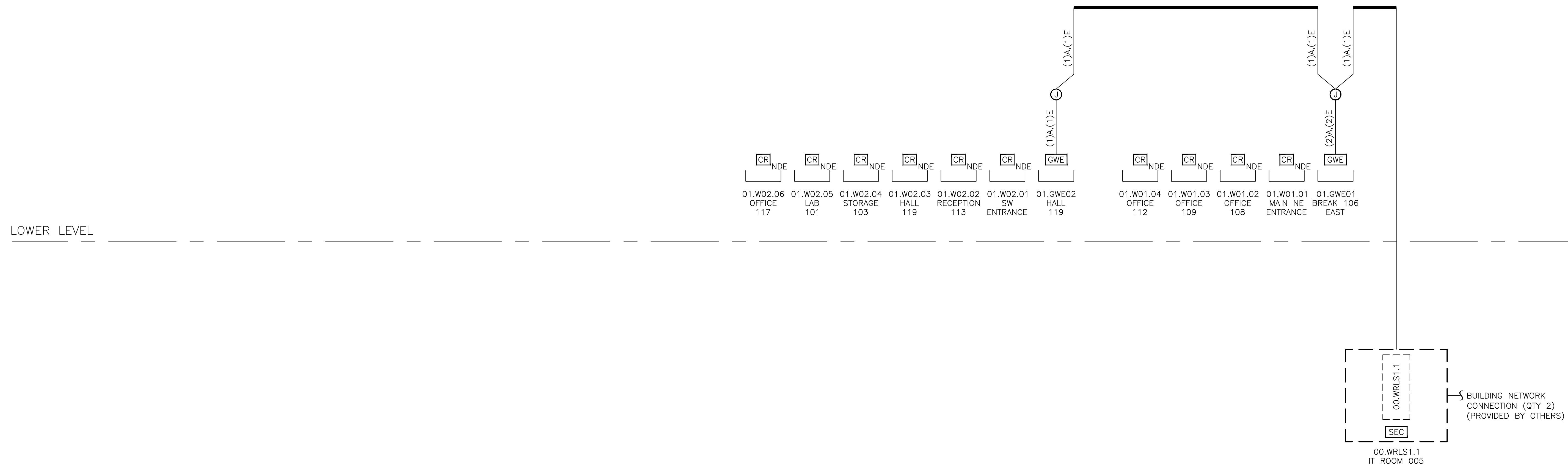
WIRELESS LOCKS
RISER DIAGRAM

PROJECT NUMBER:

GA24G3142

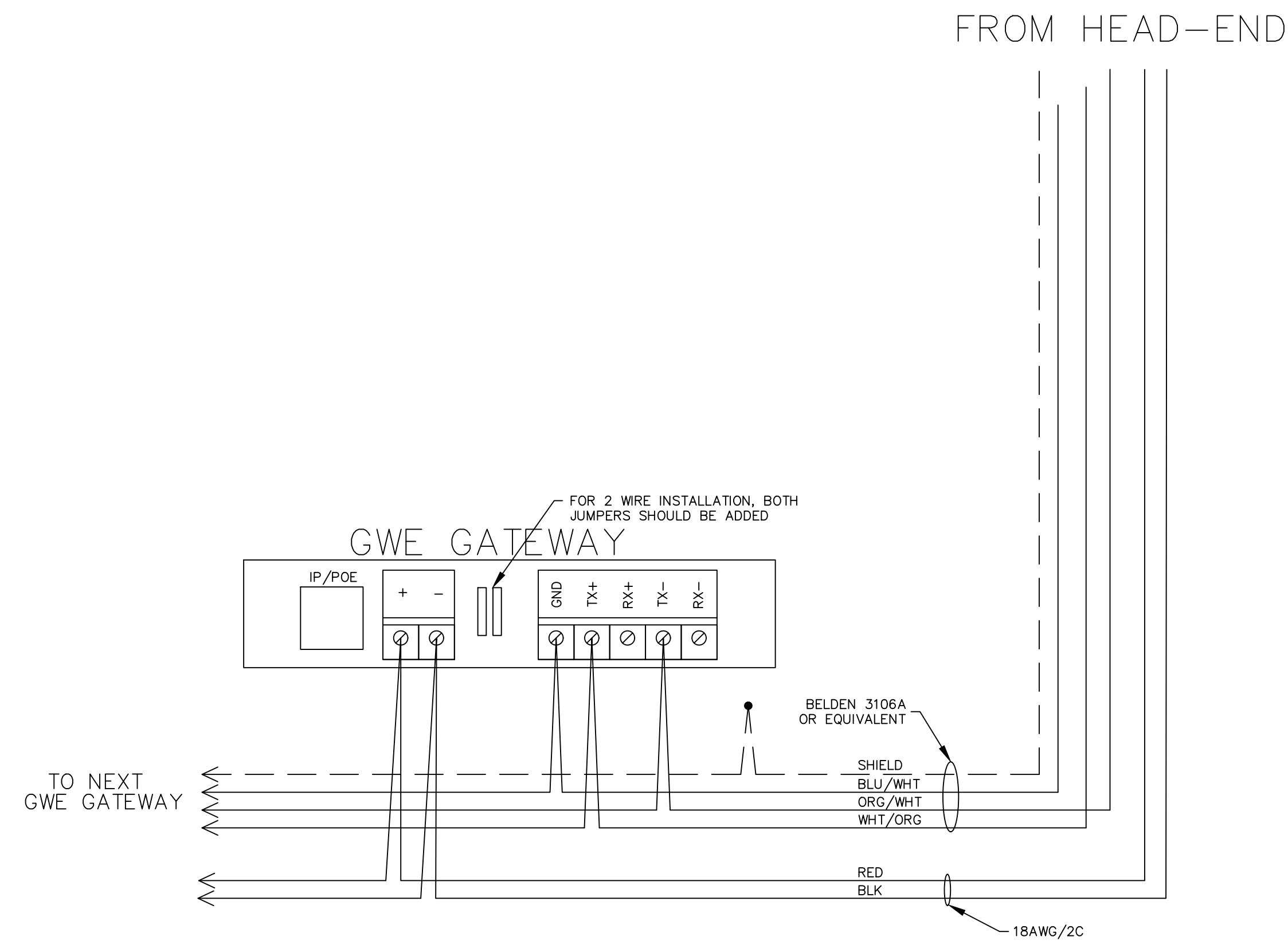
SHEET NUMBER:

RVC_SBH_W_300

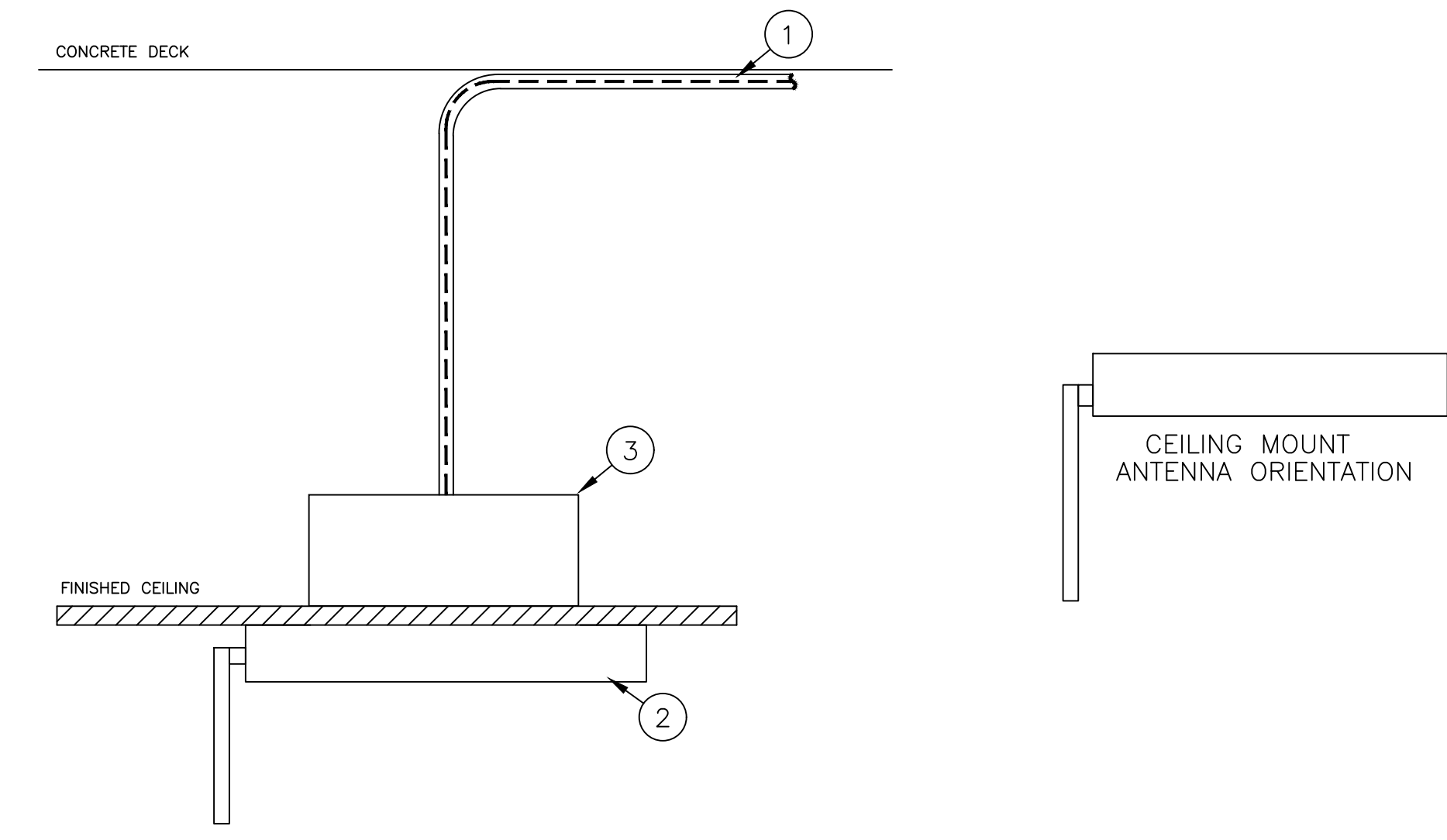


LOWER LEVEL

LOWER LEVEL



A TYPICAL GWE GATEWAY WIRING DETAIL



- ① POWER AND COMMUNICATION CABLE TO BE RUN TO HEAD-END. SEE CABLE RISER DIAGRAM (W_300). CABLE TO BE OPEN RING ROUTED ABOVE CEILING TO THE HEAD-END. ELECTRICAL TO VERIFY PROPER BUILDING CABLING REQUIREMENTS PLENUM OR NON-PLENUM.
- ② GWE GATEWAY TO BE PROVIDED BY SECURITY CONTRACTOR
- ③ NEW GATEWAYS SHALL BE MOUNTED ON CEILING TILES. PROVIDE A 4" x 4" x 2 1/8" DEEP BOX TO MOUNT GATEWAY.

B CONDUIT DETAIL - GWE GATEWAY MOUNT DETAIL

SITE NAME & ADDRESS
 ROCK VALLEY COLLEGE
 SPRING BROOK HOUSE
 6520 SPRING BROOK RD
 ROCKFORD, IL 61114

REVISION RECORD

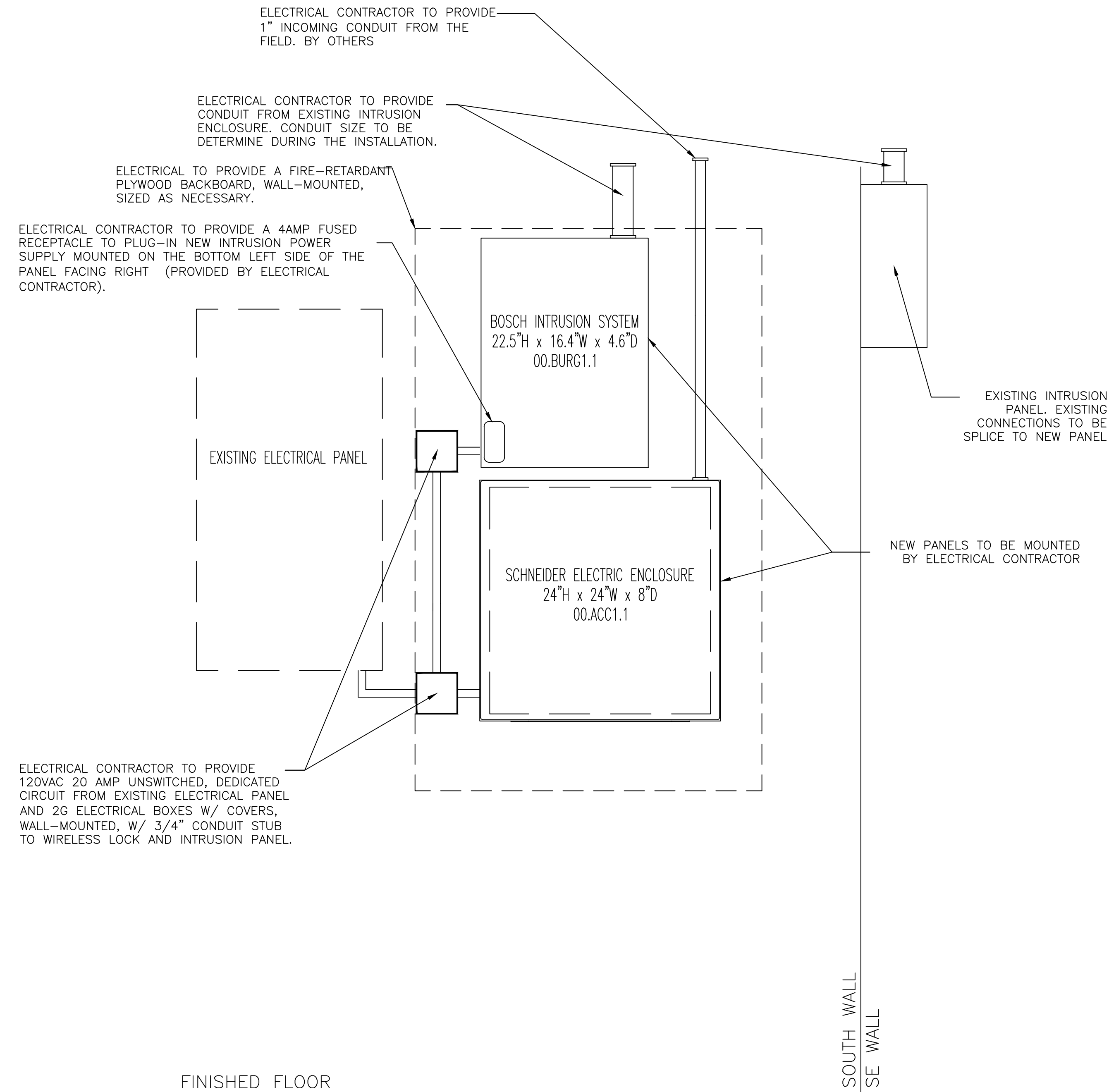
REV	DESCRIPTION	BY	DATE
1			

DATE: JULY 25, 2024
 SCALE: NONE
 DRAWN: A. BOLANOS
 CHECKED: A. BOLANOS
 APPROVED: A. GAGE

PROJECT NAME:
 RVC - SPRING BROOK HOUSE
 WIRELESS LOCKS, ACCESS CONTROL
 & INTRUSION SYSTEM

SHEET TITLE:
 WIRELESS LOCK SYSTEM
 GATEWAY TERMINATION AND MOUNTING
 DETAILS

PROJECT NUMBER:
 GA24G3142
 SHEET NUMBER:
 RVC_SBH_E_400



1 IT ROOM (00.ACC1) – ACCESS CONTROL PANEL ELEVATION

SITE NAME & ADDRESS

ROCK VALLEY COLLEGE
SPRING BROOK HOUSE
6520 SPRING BROOK RD
ROCKFORD, IL 61114

REVISION RECORD

REV	DESCRIPTION	BY	DATE
1			

DATE: JULY 25, 2024
SCALE: NONE
DRAWN: A. BOLANOS
CHECKED: A. BOLANOS
APPROVED: A. GAGE

PROJECT NAME:

RVC – SPRING BROOK HOUSE
WIRELESS LOCKS, ACCESS CONTROL
& INTRUSION SYSTEM

SHEET TITLE:

ACCESS CONTROL
PANEL ELEVATIONS

PROJECT NUMBER:

GA24G3142

SHEET NUMBER:

RVC_SBH_A_800

Spring Brook House - Intrusion Package

Project Name: **Security Upgrades**

Project Number:

Prepared for:

Rock Valley College
3301 N. Mulford Rd.
Rockford, IL 61114

Architect: N/A
Contractor: N/A
Engineer: N/A

Table of Contents

Spring Brook House - Intrusion Package	1
Specifications	3
Specifications.pdf	4
Drawings set.....	5
Drawing set.pdf	6
Points List	11
Intrusion Points List.pdf	12

Specifications

Intrusion system

1. Field Devices:

- A. Demo and replace existing Intrusion field devices with new Bosch intrusion devices. See drawing B_210
- B. Replace any intrusion-supervised EOL resistors and install them by the field device if installed at the head-end.
- C. Provide EN4204R and two EN1235F for the new wireless panic buttons in the office area. See drawing B_210.

2. Head-End:

- A. Utilize the new in-cab 4 Amp fused receptacle for intrusion power supply.
- B. Replace the existing Intrusion system master with the Bosch B8512G (master controller) and power supply, and provide the right expansion module such as B208 (8 input expansion module), B308 (8 output expansion module), B921C (Keypad), etc; to account for the existing and new devices.
- C. Provide and install CAT6 plenum-rated cable from Bosch B8512G to the nearest RVC network switch for communication.

3. Programming:

- A. The intrusion contractor shall program all points as they were previously and separate them into partitions/zones. Verify with the owner if the existing partitions/zones must be updated or modified.
- B. Test and commission all intrusion points with Schneider Electric.

Owner

The Owner will supply the following items for installation and connection by this Contractor:

1. IP Network connection from a network switch to the new Intrusion system. Document port name and number.
2. RVC to provide an IP port on an existing network switch.

Drawings set

ROCK VALLEY COLLEGE SPRING BROOK HOUSE

6520 SPRING BROOK HOUSE
ROCKFORD, IL 61114

INTRUSION SYSTEM
PROJECT NUMBER: GA24G3142
ISSUED FOR REVIEW:

TABLE OF CONTENTS:

<u>SHEET NO.</u>	<u>REV.</u>	<u>DESCRIPTION</u>	<u>DATE</u>	<u>SHEET DESCRIPTION</u>
RVC_SBH_B_001	1	ISSUED FOR REVIEW	07/26/24	TITLE SHEET & TABLE OF CONTENTS
RVC_SBH_G_100	1	ISSUED FOR REVIEW	07/26/24	SYMBOL LEGEND & GENERAL NOTES
RVC_SBH_B_200	1	ISSUED FOR REVIEW	07/26/24	DEVICE LOCATIONS - INTRUSION SYSTEM - GROUND FLOOR
RVC_SBH_B_210	1	ISSUED FOR REVIEW	07/26/24	DEVICE LOCATIONS - INTRUSION SYSTEM - 1ST FLOOR
RVC_SBH_B_700	1	ISSUED FOR REVIEW	07/26/24	INTRUSION SYSTEM PANEL BUILD DETAIL - 00.BURG1.1



1111 PASQUINELLI RD / WESTMONT, IL 60559
PHONE: 708.271.4700

SITE NAME & ADDRESS

ROCK VALLEY COLLEGE
SPRING BROOK HOUSE
6520 SPRING BROOK RD
ROCKFORD, IL 61114

REVISION RECORD

REV	DESCRIPTION	BY	DATE
1			

DATE: JULY 25, 2024
SCALE: NONE
DRAWN: A. BOLANOS
CHECKED: A. BOLANOS
APPROVED: A. GAGE

PROJECT NAME:
RVC – SPRING BROOK HOUSE
WIRELESS LOCKS, ACCESS CONTROL
& INTRUSION SYSTEM

SHEET TITLE:
TITLE SHEET &
TABLE OF CONTENTS

PROJECT NUMBER:
GA24G3142

SHEET NUMBER:
RVC_SBH_B_001

ACCESS CONTROL SYSTEM DEVICE LEGEND:

- CR NDE NDE SCHLAGE WIRELESS LOCK W/ BUILT-IN REQUEST TO EXIT, DOOR STATUS LOCK STATUS
- GWE GWE GATEWAY
- SEC SECURITY SYSTEM CABINET
- D_E EXISTING DOOR CONTACT

INTRUSION SYSTEM DEVICE LEGEND:

- D_E EXISTING DOOR CONTACT
- D_{AED} AED CABINET DOOR CONTACT
- KP INTRUSION KEY PAD
- MS_C CEILING-MOUNTED MOTION SENSOR
- PB PANIC BUTTON/DURESS BUTTON
- RX_4 INOVONICS EN4240R RECEIVER W/ FOUR RELAYS

POWER / NETWORK / MISC DEVICE LEGEND:

- BRG BURGLAR PANEL

WIRING SPECIFICATIONS & CONDUIT SIZING:

#	WIRE TYPE
A	18AWG / 2 CONDUCTOR, PLENUM
B	18AWG / 4 CONDUCTOR, PLENUM
C	18AWG / 5 CONDUCTOR, SHIELDED, PLENUM
D	23AWG / 4 PAIR CAT-6, PLENUM
E	22AWG / 1 PAIR AND AN 22AWG / 1 CONDUCTOR, SHIELDED, LOW-CAP, PLENUM (BELDEN 3106A)
F	"NOT USED"
G	"NOT USED"
H	"NOT USED"
J	"NOT USED"
K	"NOT USED"
L	"NOT USED"
M	"NOT USED"
N	"NOT USED"
P	"NOT USED"
Q	"NOT USED"
R	"NOT USED"

PERMISSIBLE CONDUIT FILL BASED ON OCCUPIED AREA (NEC RECOMMENDED 40% FILL FACTOR)

CONDUIT SIZE (IN)	PERMISSIBLE FILL (SQ. IN.)
3/4"	0.21 SQUARE IN.
1"	0.35 SQUARE IN.
1 1/4"	0.60 SQUARE IN.
1 1/2"	0.81 SQUARE IN.
2"	1.34 SQUARE IN.
2 1/2"	1.92 SQUARE IN.
3"	2.96 SQUARE IN.
3 1/2"	3.95 SQUARE IN.
4"	5.09 SQUARE IN.

NOTE 1: TABLE DEVELOPED FOR STEEL OR ALUMINUM ALLOY CONDUIT ONLY.

NOTE 2: NEC PRESCRIBED 40% FILL FACTOR IS FOR (3) OR MORE CABLES. A SINGLE CABLE CAN OCCUPY 53% OR TWO CABLES ARE LIMITED TO 31% CONDUIT FILL.

GENERAL NOTES

- 1) ALL CONDUIT IS TO BE 3/4" WITH PULL STRING UNLESS OTHERWISE SPECIFIED ON DRAWING. ARROW DENOTES HOME RUN BACK TO SECURITY EQUIPMENT LOCATION AS NOTED.
- 2) ALL DEVICES ARE HOME RUN WIRED UNLESS OTHERWISE SPECIFIED.
- 3) VERIFY ALL SITE CONDITIONS AND REPORT ALL PROBLEMS TO SCHNEIDER ELECTRIC.
- 4) FOLLOW CONDUIT FILL REQUIREMENTS AS DOCUMENTED BELOW ON THE WIRING LEGEND AND PRESCRIBED CONDUIT FILL TABLES. CONDUIT SPECIFIED BY ELECTRICAL CONTRACTOR CANNOT EXCEED A 40% FILL UNDER ANY CIRCUMSTANCES.
- 5) ALL CONDUIT FOR SECURITY / CCTV SYSTEM SHALL ONLY CONTAIN SECURITY & CCTV SYSTEM CABLES. WIRE FROM OTHER TRADES IS NOT PERMITTED IN THE SECURITY / CCTV CONDUIT SYSTEM UNDER ANY CIRCUMSTANCES.
- 6) BURIAL RATED CABLE TO BE USED FOR ANY UNDERGROUND RUNS.
- 7) ALL DRAWINGS INDICATE CURRENT PROJECT SCOPE WITH DARKENED PRINT. GRAYED DEVICES & WIRING INDICATE WORK THAT WAS PREVIOUSLY COMPLETED BUT IS CURRENTLY PART OF THE FULL SYSTEM.
- 8) PLENUM RATED CABLE TO BE USED IN ALL PLENUM CEILING AREAS. CONDITIONS TO BE FIELD VERIFIED AND REPORTED BACK TO SCHNEIDER ELECTRIC IF DIFFERENT THAN SHOWN ON DRAWINGS.

SYMBOLS

- XX = FLOOR NUMBER OR "ST" FOR SITE
- A = BUILDING AREA OR QUADRANT
- B = SYSTEM TYPE (SEE SYSTEM TYPES/PANEL TYPES LEGEND)
- ?? = SEQUENTIAL NUMBER IDENTIFIER
- ZZZZ = PANEL/HEAD-END LOCATION NUMBER
- YY = CONDUIT DETAIL NUMBER
- B_??? = DRAWING NUMBER
- 1 REVISION NUMBER IDENTIFIER
- 1 KEY NOTE IDENTIFIER

SYSTEM TYPES

- A = ACCESS CONTROL FIELD LOCATION
- C = CAMERA SYSTEM FIELD LOCATION
- W = WIRELESS LOCKS
- B = BURG / INTRUSION DETECTION

PANEL TYPES

- ACC = ACCESS CONTROL PANEL
- CAM = CAMERA SYSTEM HEAD-END/PANEL
- WRLS = LOCK WIRELESS SYSTEM HEAD-END
- BURG = BURG / INTRUSION SYSTEM HEAD-END



1111 PASQUINELLI RD./ WESTMONT, IL 60559
PHONE: 708.271.4700

SITE NAME & ADDRESS

ROCK VALLEY COLLEGE
SPRING BROOK HOUSE
6520 SPRING BROOK RD
ROCKFORD, IL 61114

REVISION RECORD

REV	DESCRIPTION	BY	DATE
1			

DATE: JULY 25, 2024
SCALE: NONE
DRAWN: A. BOLANOS
CHECKED: A. BOLANOS
APPROVED: A. GAGE

PROJECT NAME:

RVC – SPRING BROOK HOUSE
WIRELESS LOCKS, ACCESS CONTROL
& INTRUSION SYSTEM

SHEET TITLE:

SYMBOL LEGEND &
GENERAL NOTES

PROJECT NUMBER:

GA24G3142

SHEET NUMBER:

RVC_SBH_G_100

GENERAL NOTES:

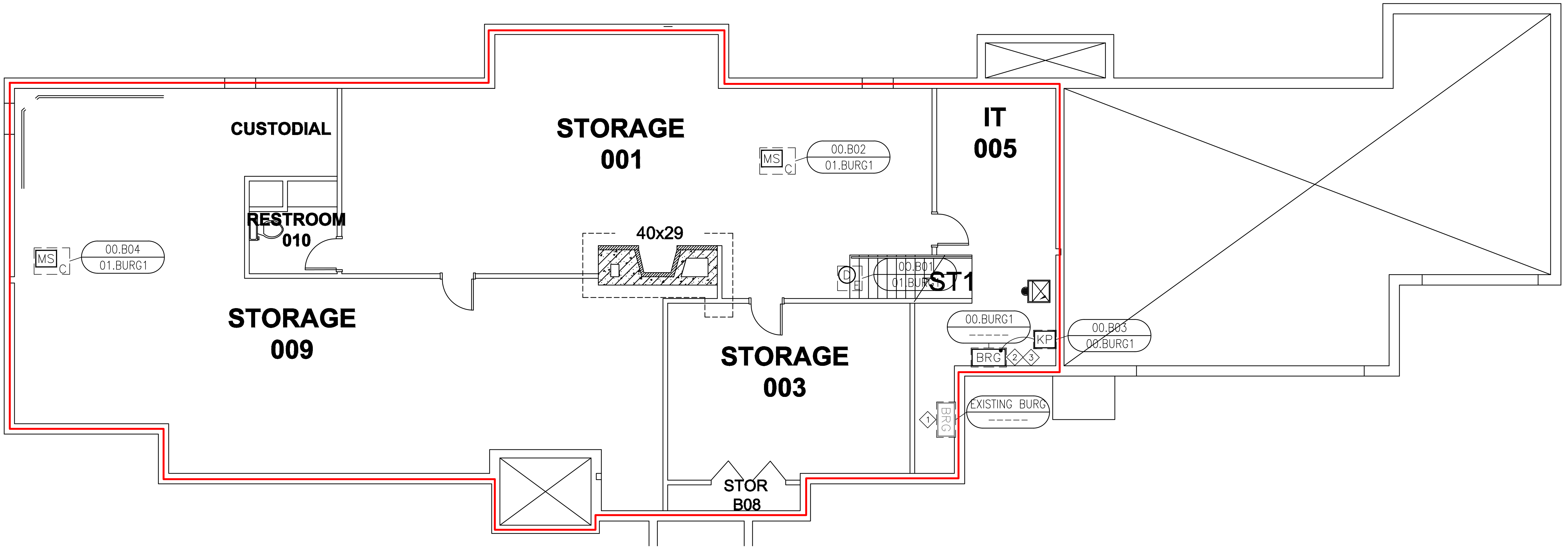
UPGRADE EXISTING INTRUSION HEAD-END SYSTEM.
UTILIZED EXISTING DEVICES AND CABLING.

KEY NOTES:

- ① EXISTING INTRUSION ENCLOSURE TO BE UTILIZED AS A SPLICING POINT FOR THE NEW INTRUSION SYSTEM.
- ② NEW INTRUSION PANEL. ELECTRICAL TO PROVIDE A NEW RACEWAY FROM THE EXISTING PANEL.
- ③ CUSTOMER TO PROVIDE AN IP DROP FOR THE ACCESS CONTROL COMMUNICATION. ELECTRICAL CONTRACTOR TO PULL CAT-6 CABLE FROM CUSTOMER NETWORK SWITCH.

BUILDING PARTITIONS:

- PARTITION 1
- PARTITION 2



SITE NAME & ADDRESS
ROCK VALLEY COLLEGE
SPRING BROOK HOUSE
6520 SPRING BROOK RD
ROCKFORD, IL 61114

REVISION RECORD

REV	DESCRIPTION	BY	DATE
1			

DATE: JULY 16, 2024
SCALE: NONE
DRAWN: A. BOLANOS
CHECKED: A. BOLANOS
APPROVED: A. GAGE

PROJECT NAME:
RVC – SPRING BROOK HOUSE
WIRELESS LOCKS, ACCESS CONTROL
& INTRUSION SYSTEM

SHEET TITLE:
DEVICE LOCATIONS –
INTRUSION SYSTEM
GROUND FLOOR

PROJECT NUMBER:
GA24G3142

SHEET NUMBER:
RVC_SBH_B_200

GENERAL NOTES:

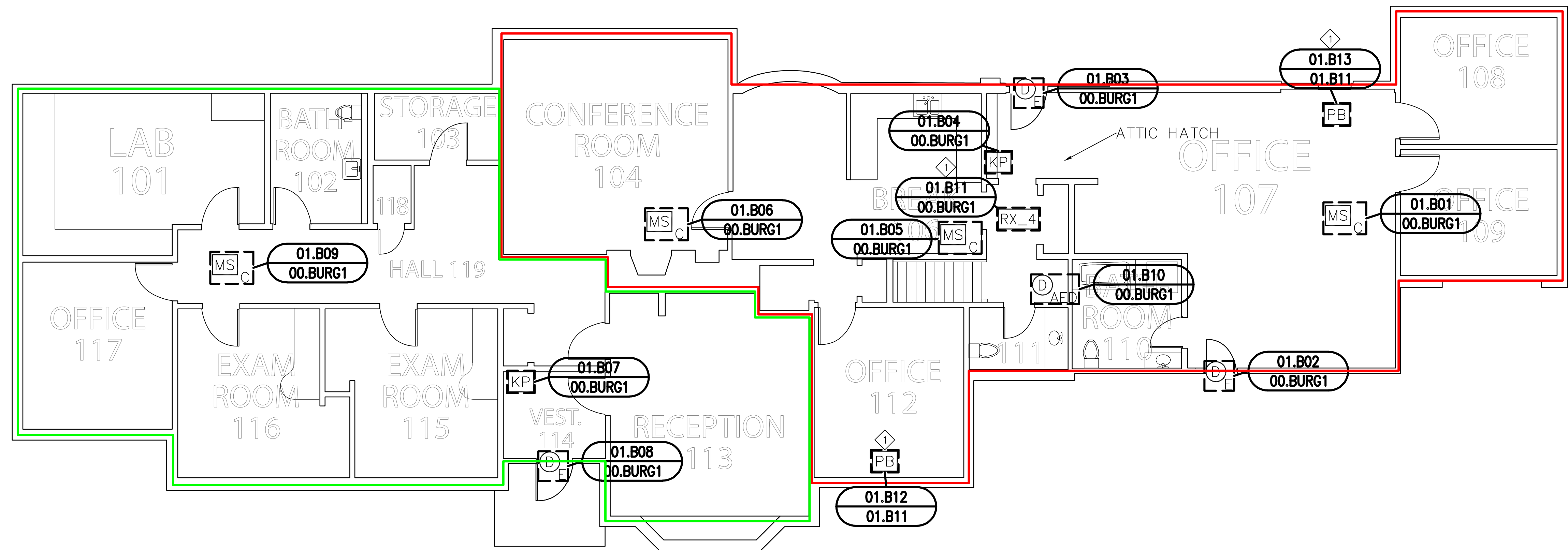
UPGRADE EXISTING INTRUSION HEAD-END SYSTEM.
INTRUSION CONTRACTOR TO REPLACE EXISTING SENSORS AND RESISTORS IF NEEDED. VERIFY FIELD RESISTOR TO BE 1K OHM.

BUILDING PARTITIONS:

- PARTITION 1
- PARTITION 2

KEY NOTES:

① INTRUSION CONTRACTOR TO PROVIDE A NEW EN4204R RECEIVER FOR THE TWO NEW EN1235F WIRELESS PANIC BUTTONS. EACH BUTTON SHALL BE PROGRAMMED AS AN INDIVIDUAL POINT FROM THE RECEIVER, ALSO PROGRAMMED FAULT AND TAMPER OUTPUTS FROM THE RECEIVER. VERIFY THE EXACT PANIC BUTTON LOCATION WITH THE CUSTOMER. INTRUSION CONTRACTOR TO PULL (3)18/4 & (1)18/2 FROM THE HEAD-END TO THE WIRELESS RECEIVER.



SITE NAME & ADDRESS

ROCK VALLEY COLLEGE
SPRING BROOK HOUSE
6520 SPRING BROOK RD
ROCKFORD, IL 61114

REVISION RECORD

REV	DESCRIPTION	BY	DATE
1			

DATE: JULY 16, 2024
SCALE: NONE
DRAWN: A. BOLANOS
CHECKED: A. BOLANOS
APPROVED: F. MACIEL

PROJECT NAME:
RVC – SPRING BROOK HOUSE
WIRELESS LOCKS, ACCESS CONTROL
& INTRUSION SYSTEM

SHEET TITLE:
DEVICE LOCATIONS –
INTRUSION SYSTEM
FIRST FLOOR

PROJECT NUMBER:
GA24G3142

SHEET NUMBER:
RVC_SBH_B_210

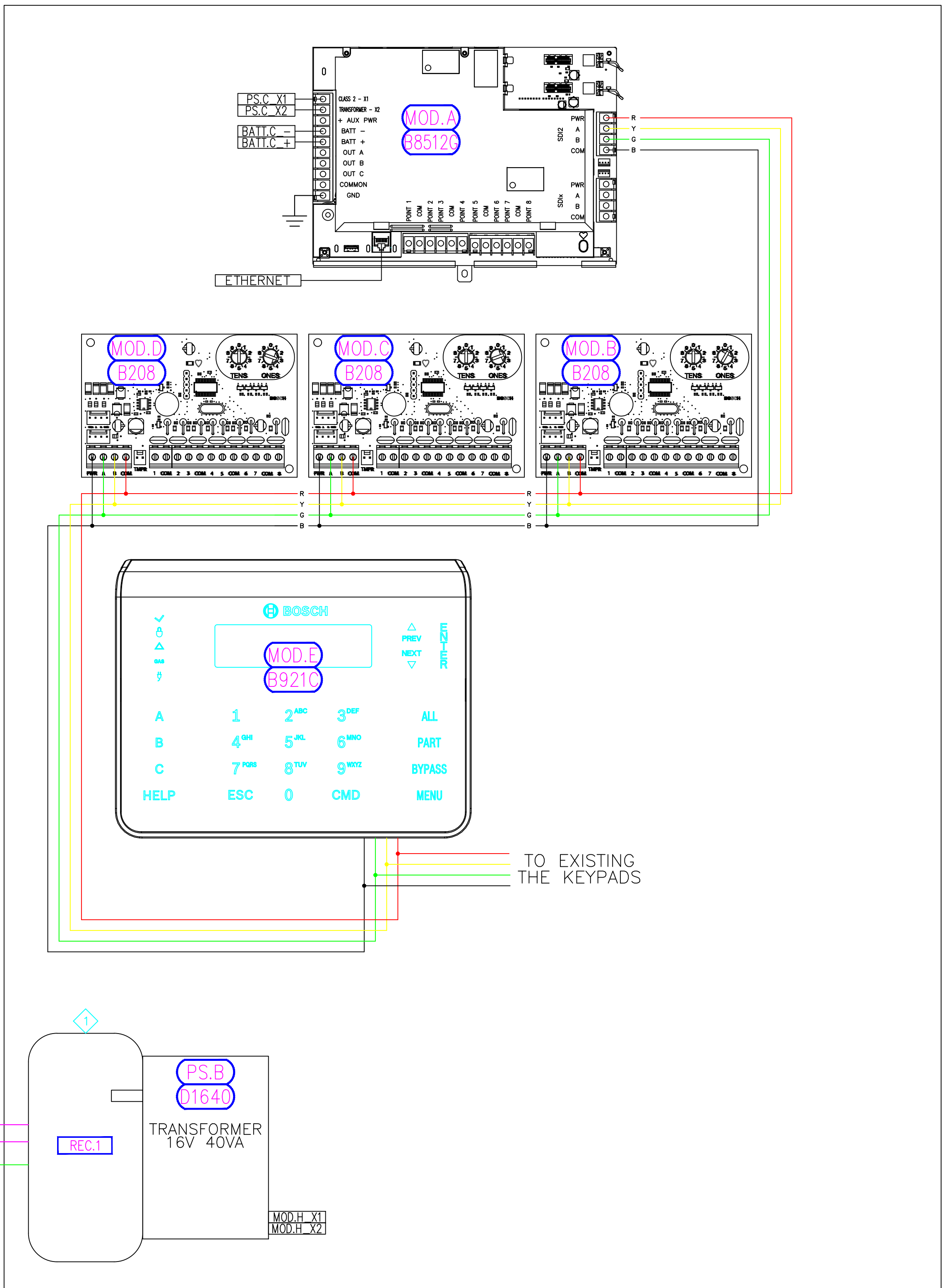
FIRST FLOOR – INTRUSION SYSTEM
① DEVICE LOCATION PLAN
SCALE: AS NOTED

GENERAL NOTES:

THE CUSTOMER IS TO PROVIDE ONE NEW ETHERNET NETWORK CONNECTIONS FOR THE INTRUSION SYSTEM.
EXISTING INTRUSION CONNECTIONS TO BE SPLICE FROM EXISTING PANEL TO NEW PANEL.

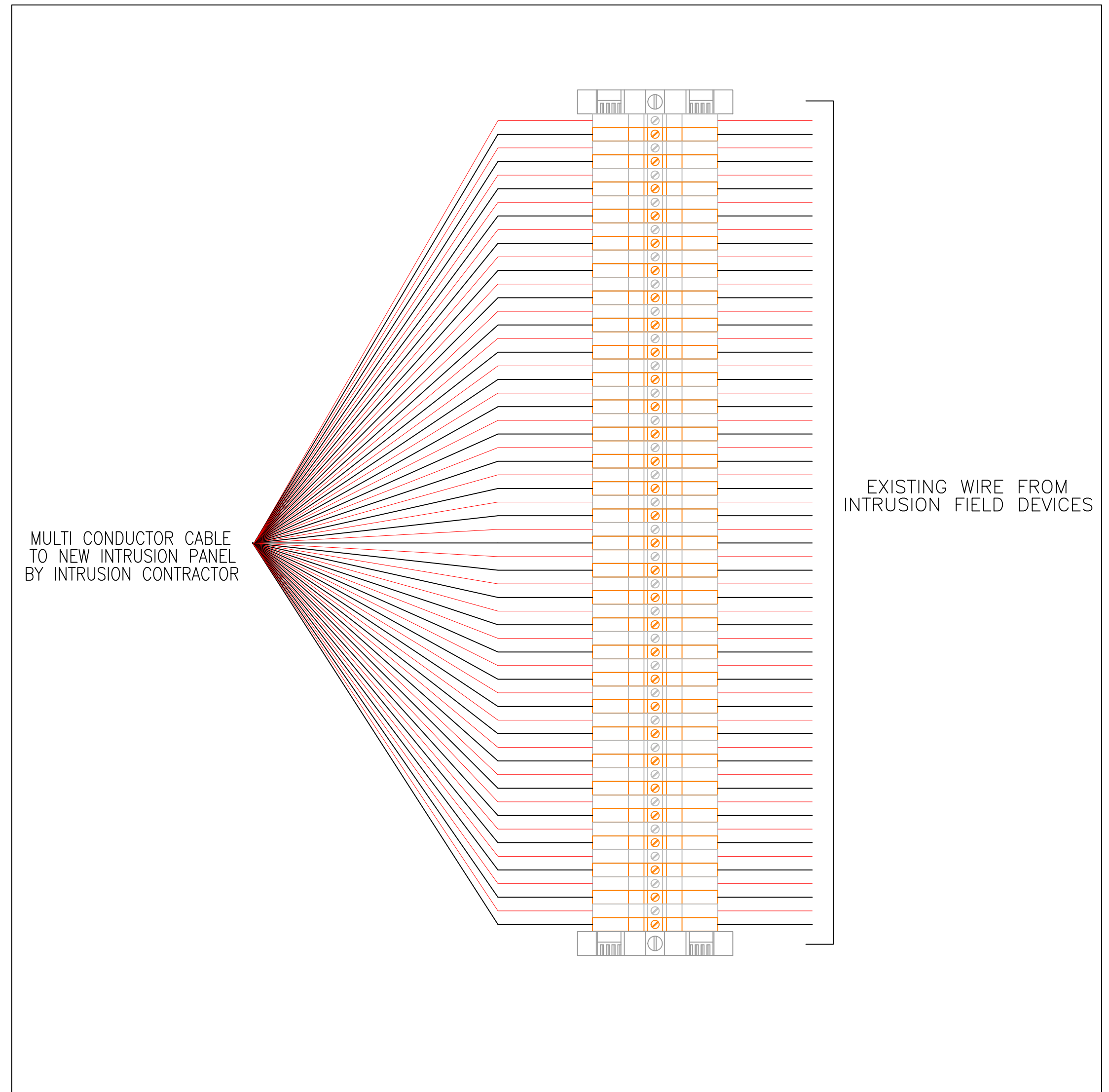
KEY NOTES:

- 1 ELECTRICAL TO PROVIDE 4AMP FUSE RECEPTACLE FOR INSIDE THE NEW INTRUSION ENCLOSURE.
- 2 PROVIDE 12V Ah BATTERY BACK-UP BATTERIES FOR THE NEW INTRUSION PANEL.

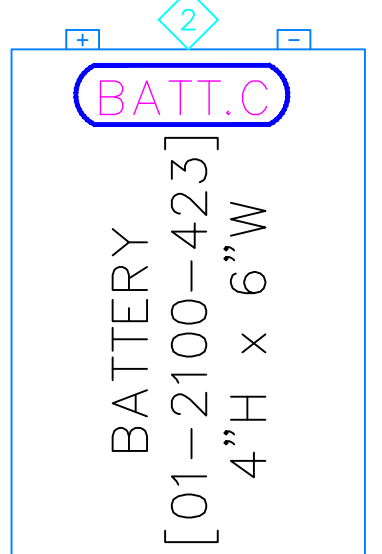


BOSCH B18 INTRUSION SYSTEM
22.5"H x 16.4"W x 4.6"D

00.BURG1
IT ROOM 005 (ABOVE NEW WIRELESS LOCK PANEL)



EXISTING INTRUSION ENCLOSURE
IT ROOM 005 (ABOVE THE FIRE ALARM PANEL)



SITE NAME & ADDRESS
ROCK VALLEY COLLEGE
SPRING BROOK HOUSE
6520 SPRING BROOK RD
ROCKFORD, IL 61114

REVISION RECORD

REV	DESCRIPTION	BY	DATE
1			

DATE: JULY 24, 2024
SCALE: NONE
DRAWN: A. BOLANOS
CHECKED: A. BOLANOS
APPROVED: A. GAGE

PROJECT NAME:
RVC - SPRING BROOK HOUSE
WIRELESS LOCKS, ACCESS CONTROL
& INTRUSION SYSTEM

SHEET TITLE:
INTRUSION SYSTEM
PANEL BUILD
DETAILS - EXISTING & NEW
00.BURG1 PANEL

PROJECT NUMBER:
GA24G3142

SHEET NUMBER:
RVC_SBH_B_700

Points List

Notes: The information below, such as point count, keypads, and partition/zones, was taken from the existing workstation list. Verify point count and keypads during installation.

Points List						
#	Floor plan location	Name	Point Type	Partition/Zone	Device Type	Notes
1	01.B03	OSF Front Door	Standard Delay		Door Contact	
2	TBD	Panic Lower	24 Hr Bell			
3	TBD	OSF Panic Fr	24 Hr Bell			
4	TBD	OSF Refrig	24 HR Technical			
5	01.B08	Foun Back Dr	Standard Delay		Door Contact	
6	00.B01	Basement Door	Instant		Door Contact	
7	01.B09	OSF Hall Motion	Instant		Wall Motion	
8	01.B06	Conf Rm Motion	Instant		Wall Motion	
9	01.B05	Kitchen Motion	Instant		Wall Motion	
10	01.B01	OSF Vest Mot	Interior Delay		Wall Motion	
11	TBD	EL Panel Water	24 Hr Water			
12	TBD	C Mann Water	24 Hr Water			
13	00.B02	Basmnt Motion	Instant		Wall Motion	
14	TBD	Graphics N Dr	Instant			
15	TBD	Graphics S Dr	Instant			
16	TBD	Graph 360 Mot	Instant		Wall Motion	
17	TBD	Graph N Off Mot	Instant		Wall Motion	
18	TBD	Graph S Off Mot	Instant		Wall Motion	
19	TBD	Graph N Off HU	24 Hr Bell			
20	TBD	Graph S Off HU	24 Hr Bell			
21	01.B10	AED	24 Hr Bell		Door Contact	
22	00.B04	Basmnt Stor Motion	Instant		Wall Motion	
23	01.B12	Office 112 Panic Button			Panic Button	New device added per Intrusion upgrade
24	01.B13	Office 107 Panic Button			Panic Button	New device added per Intrusion upgrade
25	01.B11	Receiver Tamper				New device added per Intrusion upgrade
26	01.B11	Receiver Fault				New device added per Intrusion upgrade

Keypads					
#	Floor plan location	Name	Point Type	Partition/Zone	Notes
1	01.B04	Main Entry	Pad		
2	01.B07	Back Door	Pad		
3	00.B03	Panel	Pad		NEW

Partitions / Zone	
#	Name
1	TBD by customer
2	TBD by customer

Verify proper point naming and location before assigning the proper partition during Intrusion configuration.